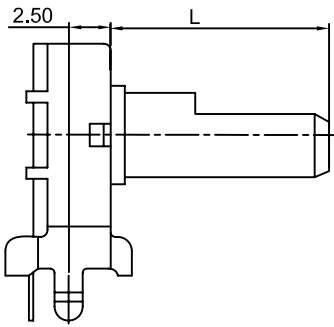
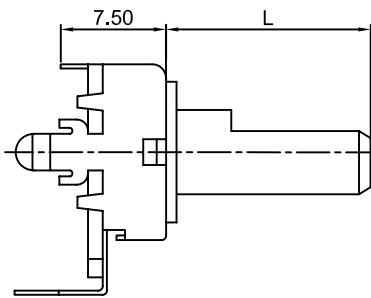


# 軸的型式: Type of shaft

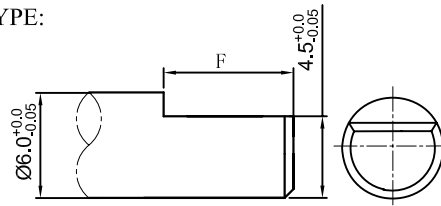
## Horizontal(水平)



## Vertical(垂直)

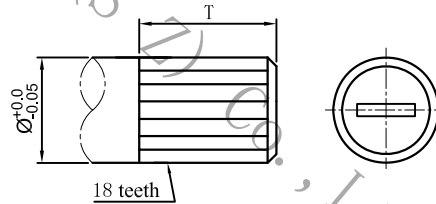


### F TYPE:



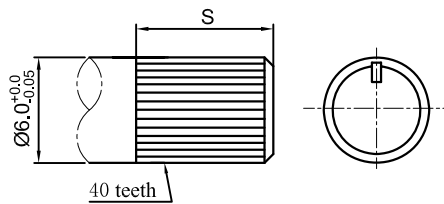
X	F	A	G	E	B	C	D	Y
L	7.5	12.5	12.5	15.5	17.5	22.5	27.5	13.5
F	5	7	8	12	12	12	12	12

### T TYPE:



X	0	1	2	3	4	5	6
L	7.5	10.5	12.5	17.5	22.5	27.5	32.5
F	5	7	7	12	12	12	12

### S TYPE:



X	P	Q	R	S	T	U
L	7.5	12.5	17.5	22.5	27.5	32.5
S	5	7	7	12	12	12

電氣的性能 :Electrical Characteristics

全阻抗值 (Total Resistance)	500Ω~1MΩ
全阻抗值允许偏差 (Total Resistance Tolerance)	±20%(more than 1MΩ±30%)
阻值變化特性 (Resistance Taper)	A、B、C
残留阻值 (Residual Resistance)	R ≥ 250KΩ 0.1% max.of total resistance 10KΩ < R < 250KΩ 20Ω max. R ≤ 10KΩ 10Ω max.
額定功率 (Rated Power)	B:0.15W Other than B:0.08W
最高使用電壓 (Max.Operating Voltage)	B:150V AC/10V DC Other than B:100VAC/10VDC
絕缘阻抗 (Insulation Resistance)	More than 100MΩ at DC 500V
相互偏差 (Gang Error)	/
<b>機械的性能:Mechanical Characteristics</b>	
全回轉角度 (Rotation Angle)	300°±10°
旋轉力矩 (Rotation Torque)	3~20mN.m (30~200gf.cm)
軸的拉、押強度 (Pull-Push Strength)	70N (7kgf) max.
轉動止檔強度 (Rotational Stop-End Torque)	0.5N.m(5kgf.cm)
軸的搖動量 (Shaft Wobble)	0.7*L/30mmp-p MAX.
<b>耐久的性能 (Durability)</b>	
回轉壽命 (Rotational Life)	10,000 cycles