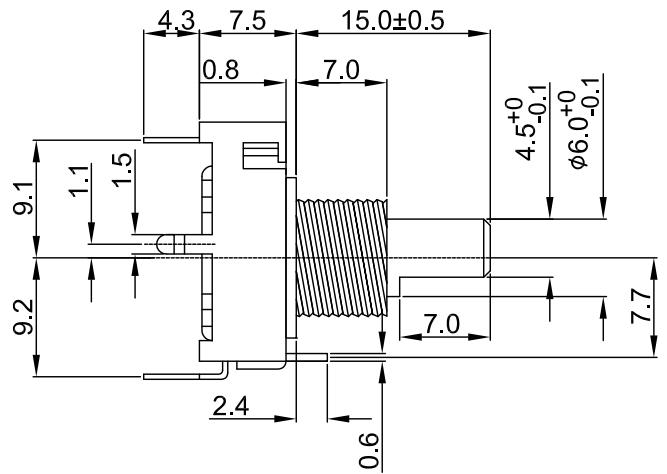
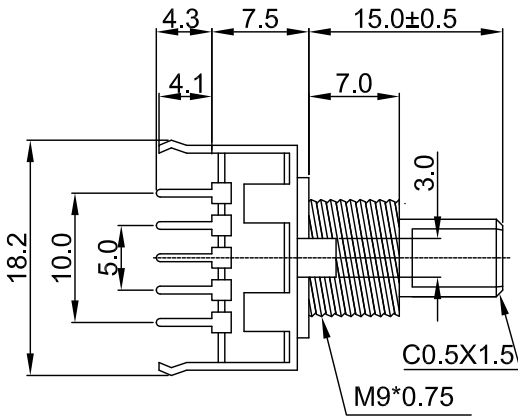
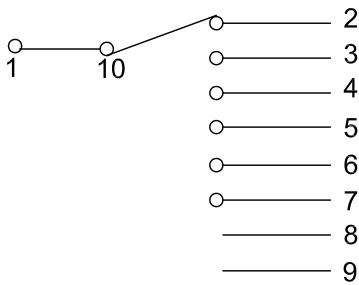


# 外形图 Mechanical Dimensions



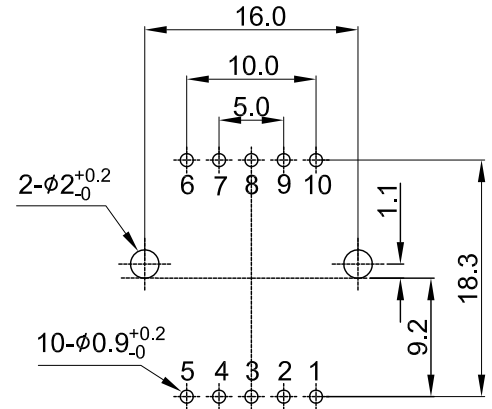
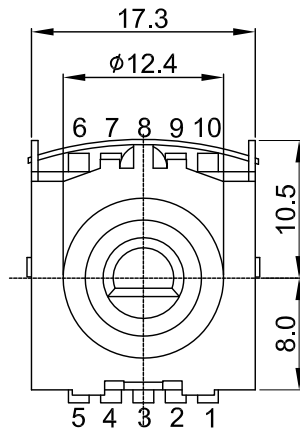
## 接线图 Circuit explanation



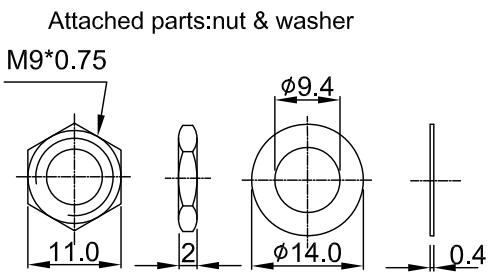
**Note:**

- (1) 1#&10# Public terminal.
- (2) 1 pole/7 detent, Changeover angle 30°
- (3) Total rotational angle: 150°

## 安装孔位图 P.C.B. mounting hole detail






Shaft shown in full  
C.C.W position



|                      |               |             |           |              |                         |          |  |    |
|----------------------|---------------|-------------|-----------|--------------|-------------------------|----------|--|----|
| 3                    |               |             |           | PRODUCT NAME | <b>Rotary Switch</b>    |          |  |    |
| 2                    |               |             |           | MODEL NAME   | <b>RS17-15F7D1-1-6P</b> |          |  |    |
| 1                    |               |             |           | APPROVED BY  | CHECKED BY              | DRAWN BY |  |    |
| NO                   | DATE          | DESCRIPTION |           |              |                         |          |  |    |
| DIMENSION            | TOLERANCE     | SCALE       | UNIT      |              |                         |          |  | mm |
| $\int \leq 10$       | $\pm 0.2$     | VER.        | A0        |              |                         |          |  |    |
| $10 < \int \leq 30$  | $\pm 0.5$     | DATE        | 2015/7/21 |              |                         |          |  |    |
| $30 < \int \leq 100$ | $\pm 1.0$     |             |           |              |                         |          |  |    |
| All Angles           | $\pm 5^\circ$ |             |           |              |                         |          |  |    |

# 17mm Rotary Switch Specifications

| 1. 電氣性能 (Electrical Characteristic)  |  |    |   |    |   |
|--------------------------------------|--|----|---|----|---|
| 1.1                                  | 額定功率 (Rated Power) 0.3A  |    |   |    |   |
| 1.2                                  | 最高使用電壓 (Max.Operating Voltage) 16V DC  |    |   |    |   |
| 1.3                                  | 接觸电阻初期( Contact Resistance-initial performance) 100MΩ Max.                                       |    |   |    |   |
|                                      | 接觸电阻壽命后( Contact Resistance-After lifetime) 200MΩ Max.   |    |   |    |   |
| 1.4                                  | 絕緣阻抗 (Insulation Resistance) 100MΩ Min. at DC 100V   |    |   |    |   |
| 1.6                                  | 耐電壓 (Withstand Voltage) 1 minute at: AC 100V   |    |   |    |   |
| 2. 機械性能 (Mechanical Characteristics) |  |    |   |    |   |
| 2.1                                  | 旋轉力矩 (Rotation Torque) 80~200gf.cm   |    |   |    |   |
| 2.2                                  | 軸的拉、押強度 (Pull-Push Strength) 6Kgf.cm   |    |   |    |   |
| 2.3                                  | 轉動止檔強度 (Rotational Stop-End Torque) 3kgf.cm MiM i  |    |   |    |   |
| 2.4                                  | 切換开关角度 (Changeover angle ) 30 dergee   |    |   |    |   |
| 2.5                                  | 回路數 (Poles) 1  |    |   |    |   |
| 2.6                                  | 接觸点(positions) 6   |    |   |    |   |
| 2.7                                  | 焊錫耐熱性-手工焊接 (Soldering Heat with Manual ) 300° Max. 3s  |    |   |    |   |
|                                      | 焊錫耐熱性-浸焊 (Soldering Heat with Dip ) 260° Max. 5s   |    |   |    |   |
| 3. 耐久性能 (Durability)                 |  |    |   |    |   |
| 3.1                                  | 回轉壽命 (Rotation Life) 10,000 Cycles min.  |    |   |    |   |
| 3.2                                  | 工作溫度 (Operating temperature) -10℃~+70℃   |    |   |    |   |
| 4.1                                  | 外形尺寸圖/曲線特性圖<br>(Shape size drawing/curve characteristic drawing) 見附頁<br>Please refer the drawing |    |   |    |   |
| 批准                                   |               | 審核 |  | 設計 |  |