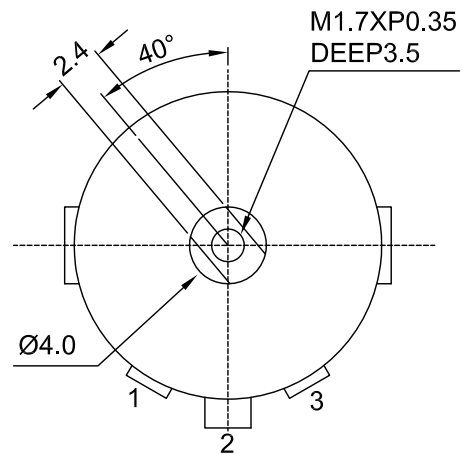
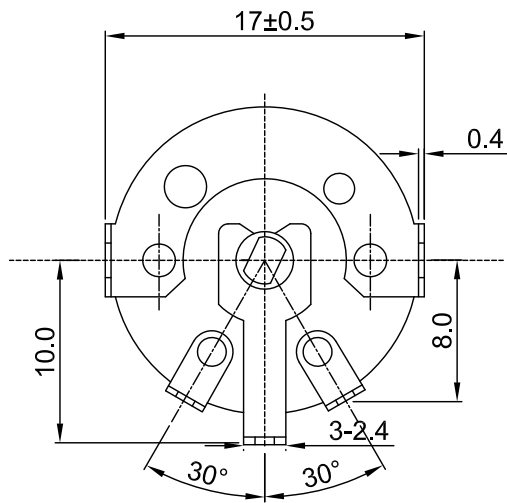
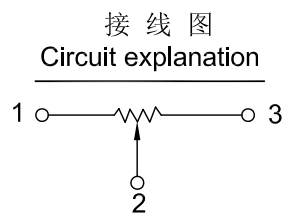
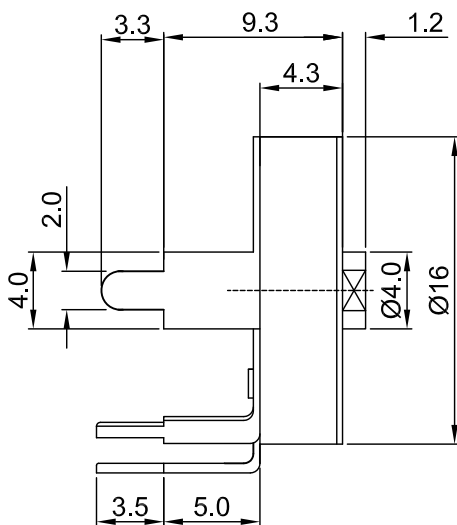


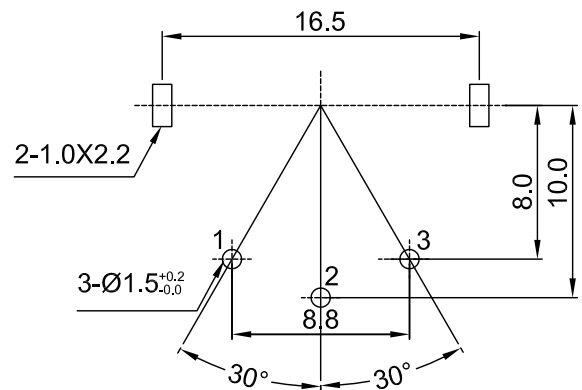
外形图 Mechanical Dimensions



Shaft shown in full
C.C.W. position



安装孔位置图
P.C.B. mounting hole detail



3			PRODUCT NAME	Rotary Potentiometer		
2			MODEL NAME	R167N-1.2D1-Value		
1			APPROVED BY	CHECKED BY	DRAWN BY	
NO	DATE	DESCRIPTION				
		DIMENSION	TOLERANCE	SCALE		
		$\int \leq 10$	± 0.2	UNIT	mm	
		$10 < \int \leq 30$	± 0.5	VER.	A0	
		$30 < \int \leq 100$	± 1.0	DATE	2015/7/17	
		All Angles	$\pm 5^\circ$			



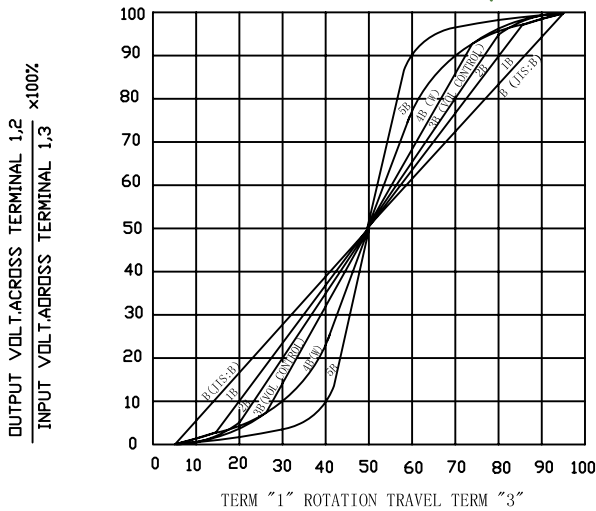
YU WAH (D G) CO.,LTD

16 mm Rotary Potentiometers with SW series Specifications

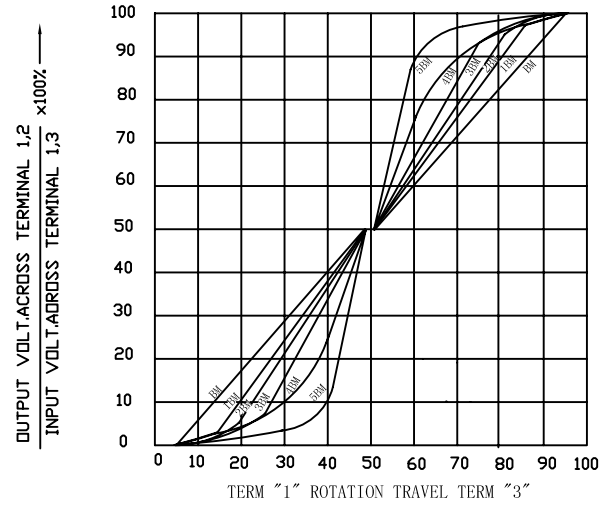
1.電氣性能 (Electrical Characteristics)					
1.1	全阻抗值 (Total Resistance)			1KΩ~1MΩ	
1.2	全阻抗值允許偏差 (Total Resistance Tolerance)			±20% (More than 1 M Ω ±30%)	
1.3	電阻隨溫度變化特性 Resistance of temperature change character)			20℃~75℃:△R/R≤±5%, -25℃~20℃:△R/R≤±4.5%	
1.4	阻值變化特性 (Resistance Taper)			B	
1.5	零位阻值 (Residual Resistance)			R>250KΩ / 0.1 % max. of total Value 250KΩ>R>10KΩ / 20Ω max. 10KΩ>R / 10Ω max.	
1.6	額定功率 (Rated Power)			Linear Taper B: 0.02W Other Taper:0.01W	
1.7	最高使用電壓 (Max.Operating Voltage)			150V AC	
1.8	動雜音 (Rotational Noise)			Less Than 100mV	
1.9	絕緣阻抗 (Insulation Resistance)			More than 50MΩ at DC 500V	
1.10	耐電壓 (Withstand Voltage)			For 1 minute at: AC 500V	
1.11	开关额定功率(Switch Rated Power)			-----	
1.12	同步誤差 (Gang Error)			-----	
2.機械性能 (Mechanical Characteristics)					
2.1	全回轉角度 (Rotation Angle)			260°±10°	
2.2	旋轉力矩 (Rotation Torque)			20~150gf.cm	
2.3	軸的拉、押強度 (Pull-Push Strength)			1 Kgf.cm	
2.4	轉動止檔強度 (Rotational Stop-End Torque)			2 kgf.cm Min	
2.5	开关角度(Switch Working Angel)			-----	
2.6	开关力矩(Switch Working Torque)			-----	
2.7	旋轉定位數目 (Number of Detents(click)			no detent	
2.8	焊錫耐熱性 (Resistance To Soldering Heat)			260±5℃ and less than 3 seconds	
3.耐久性能 (Durability)					
3.1	回轉壽命 (Rotation Life)			10,000 Cycles min.	
3.2	工作溫度 (Operating temperature)			-10℃~+70℃	
4.1	外形尺寸圖/曲線特性圖 (Shape size drawing/curve characteristic drawing)			見附頁 Please refer the drawing	
批准	<div><div>R & D</div><div>2014/10/21</div><div>Eva</div></div>	審核	<div><div>R & D</div><div>2014/10/21</div><div>Sophie</div></div>	設計	<div><div>R & D</div><div>2014/10/21</div><div>Ball</div></div>

RESISTANCE TAPER

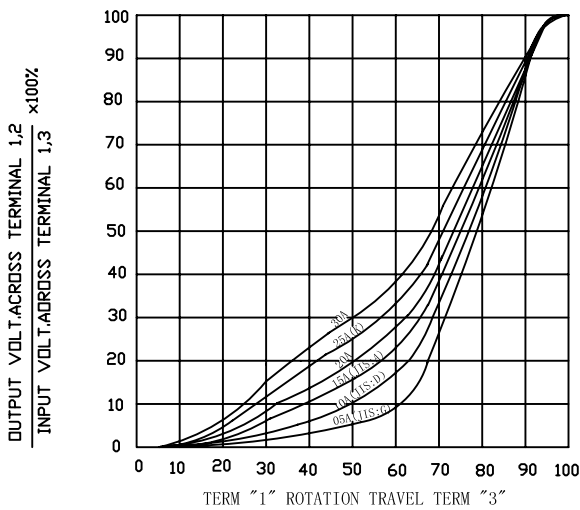
TAPER B SERIES



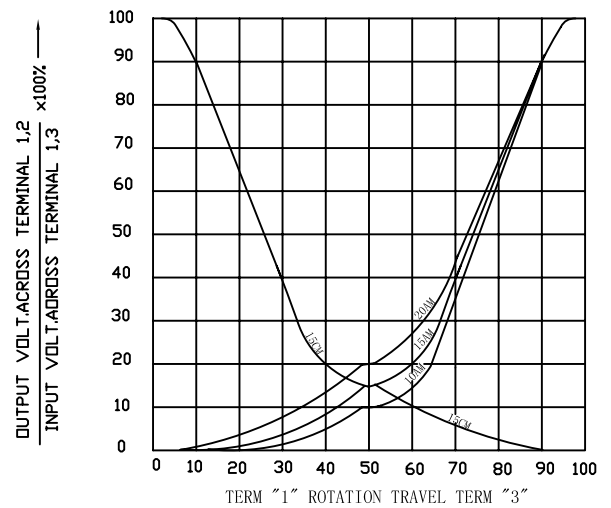
TAPER B WITH 50% TAP



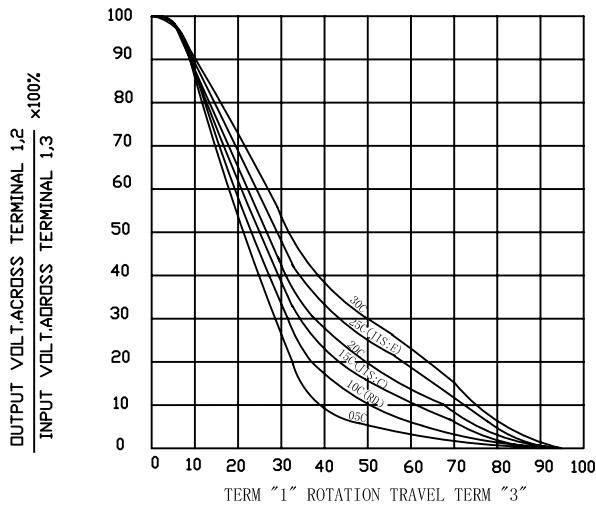
TAPER A SERIES



TAPER A & C WITH 50% TAP



TAPER C SERIES



TAPER M & N SERIES

