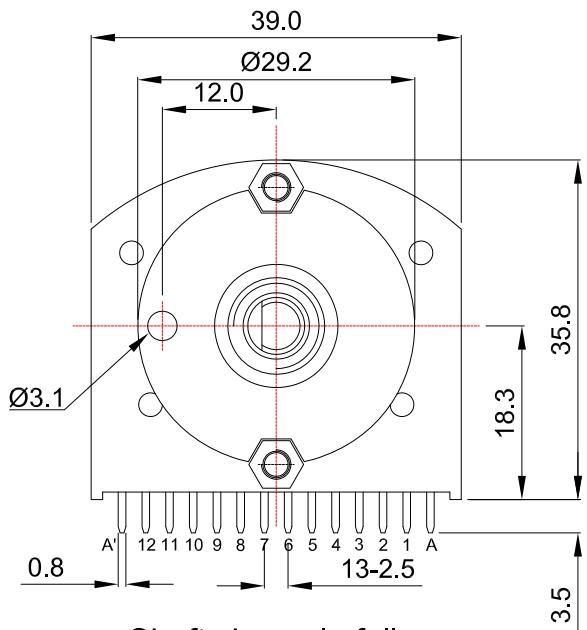
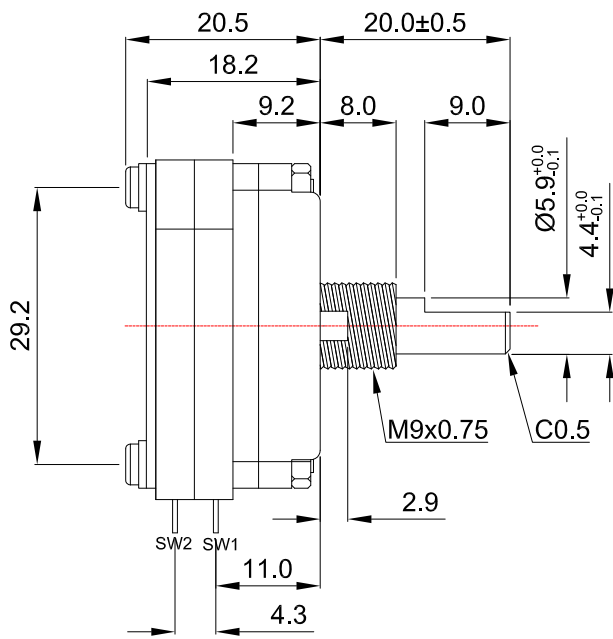
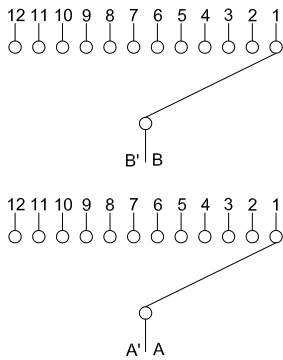


外形图 Mechanical Dimensions

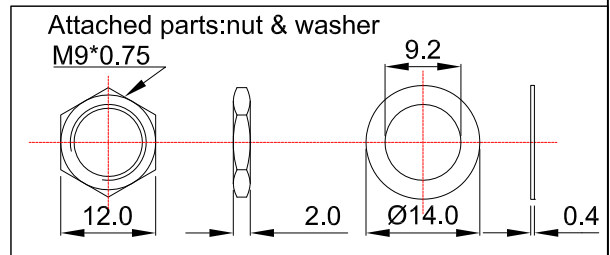
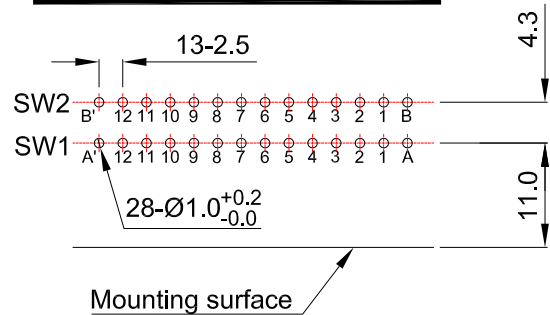


Shaft shown in full
C.C.W. position

电性回路示意图
Switch pole






安装孔位置图
P.C.B. mounting hole detail



3				PRODUCT NAME	Rotary switch	
2				MODEL NAME	RS39-BA1-2-12P-4.4	
1				APPROVED BY	CHECKED BY	DRAWN BY
NO	DATE	DESCRIPTION				
	DIMENSION	TOLERANCE	SCALE			
	$f \leq 10$	± 0.2	UNIT	mm		
	$10 < f \leq 30$	± 0.5	VER.	A0		
	$30 < f \leq 100$	± 1.0	DATE	2017/12/8		
	All Angles	$\pm 5^\circ$				
				<div style="border: 1px solid black; border-radius: 50%; padding: 5px; width: 60px; margin: 0 auto;"> <b style="color: red;">R & D 2017/12/8 Eva </div>	<div style="border: 1px solid black; border-radius: 50%; padding: 5px; width: 60px; margin: 0 auto;"> <b style="color: red;">R & D 2017/12/8 Sophie </div>	<div style="border: 1px solid black; border-radius: 50%; padding: 5px; width: 60px; margin: 0 auto;"> <b style="color: red;">R & D 2017/12/8 Dick </div>

39mm Rotary Switch Specifications

1. 電氣性能 (Electrical Characteristic)	
1.1	額定功率 (Rated Power) 0.5A
1.2	最高使用電壓 (Max.Operating Voltage) 125V AC / 30V DC
1.3	接觸电阻初期(Contact Resistance-initial performance) 50Ω Max.
	接觸电阻壽命后(Contact Resistance-After lifetime) 200Ω Max.
1.4	絕緣阻抗 (Insulation Resistance) 100MΩ Min. at DC 500V
1.6	耐電壓 (Withstand Voltage) 1 minute at: AC 500V
2. 機械性能 (Mechanical Characteristics)	
2.1	旋轉力矩 (Rotation Torque) 1 to 3 kgf.cm
2.2	軸的拉、押強度 (Pull-Push Strength) 8 kgf.cm
2.3	轉動止檔強度 (Rotational Stop-End Torque) 10 kgf.cm
2.4	切換开关角度 (Changeover angle) 30 dergee
2.5	回路數 (Poles) 2
2.6	接觸点(positions) 12
2.7	焊錫耐熱性-手工焊接 (Soldering Heat with Manual) 350° Max. 3s
	焊錫耐熱性-浸焊 (Soldering Heat with Dip) <u>260° Max. 5s</u>
3. 耐久性能 (Durability)	
3.1	回轉壽命 (Rotation Life) 10,000 Cycles min.
3.2	工作溫度 (Operating temperature) -10℃~+70℃
4.1	外形尺寸圖/曲線特性圖 (Shape size drawing/curve charcteristic drawing) 見附頁 Please refer the drawing
批准	<div style="display: flex; justify-content: space-around; align-items: center;"> <div style="text-align: center;">  </div> <div style="text-align: center;"> 審核 </div> <div style="text-align: center;">  </div> <div style="text-align: center;"> 設計 </div> <div style="text-align: center;">  </div> </div>