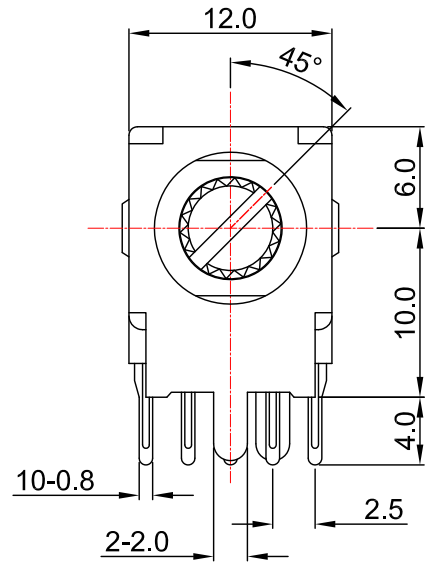
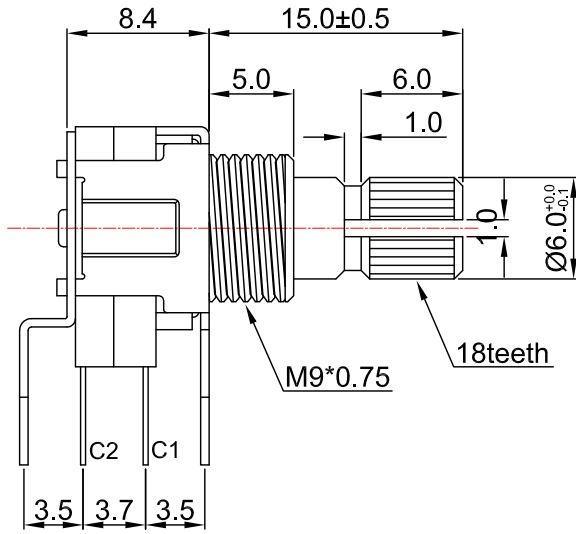
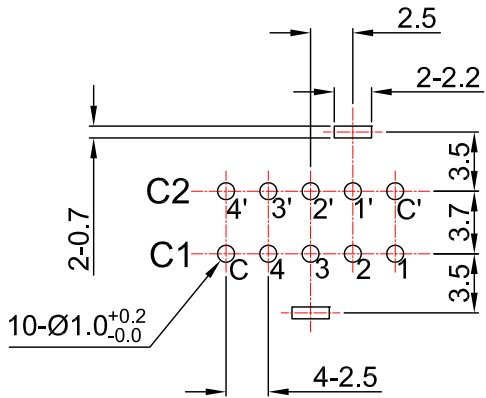


外形图 Mechanical Dimensions

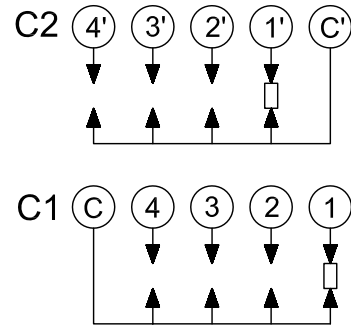


Shaft shown in full C.C.W. position

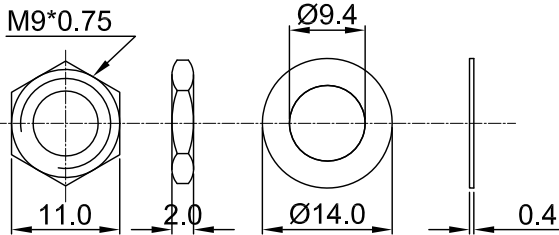
安装孔位置图
P.C.B. mounting hole detail



接线图
Circuit explanation





Attached parts : nut & washer



3			PRODUCT NAME	Rotary Potentiometer		
2			MODEL NAME	RS12-15KQA1-2-1-4P		
1			APPROVED BY	CHECKED BY	DRAWN BY	
NO	DATE	DESCRIPTION				
DIMENSION	TOLERANCE	SCALE				
$\int \leq 10$	± 0.2	UNIT	mm			
$10 < \int \leq 30$	± 0.5	VER.	A0			
$30 < \int \leq 100$	± 1.0	DATE	2019/10/22			
All Angles	$\pm 5^\circ$					

12 mm Rotary Switch Specifications

1. 電氣性能 (Electrical Characteristic)					
序号	項目			特性	
1.1	額定功率 (Rated Power)			16V DC 3A	
1.2	絕緣阻抗 (Insulation Resistance)			100MΩ at DC 500V	
1.3	耐電壓 (Withstand Voltage)			For 1 minute at:AC 500V	
1.4	接觸電阻 (Contact Resistance)			50mΩ max.	
2. 機械性能 (Mechanical Characteristics)					
2.1	每段角度 (Step Angle)			30°±5°	
2.2	旋轉力矩 (Rotation Torque)			500±200gf.cm	
2.3	軸的拉、押強度 (Pull-Push Strength)			6Kgf	
2.4	轉動止檔強度 (Rotational Stop-End Torque)			5kgf.cm	
2.5	焊錫耐熱性 (Resistance To Soldering Heat)			260±5°C at 3 seconds	
2.6	使用溫度範圍: (Used Temperature Range)			-10°C ~ +70°C	
2.7	/			/	
3. 耐久性能 (Durability)					
3.1	回轉壽命 (Rotation Life)			10,000Cycles Min	
批 准			審 核		
				設 計	