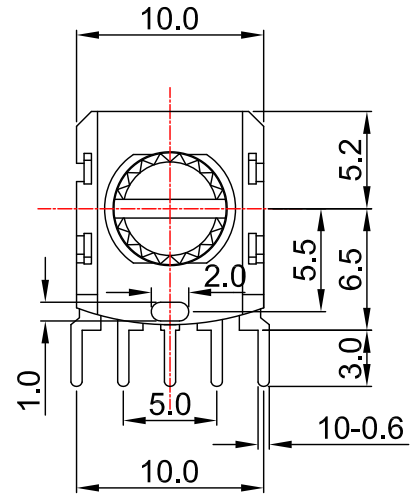
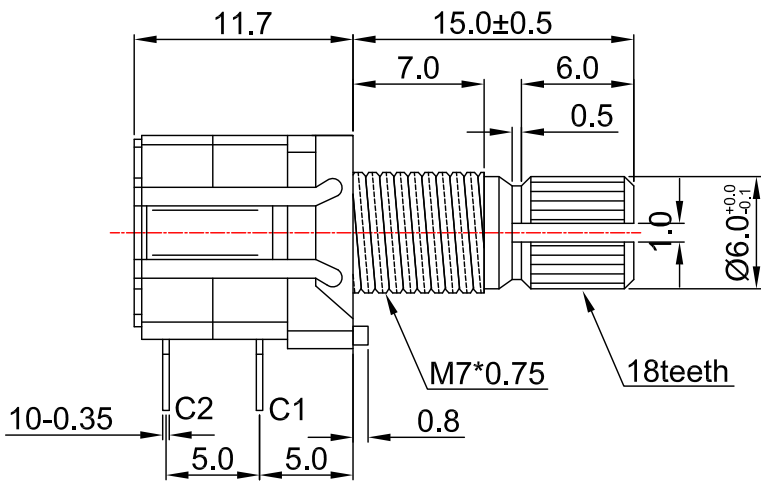
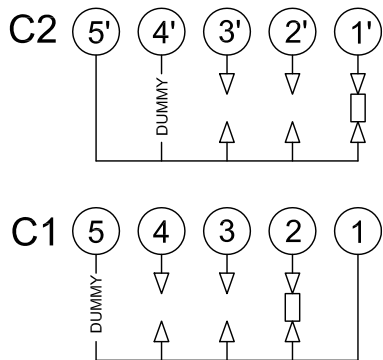


外形图 Mechanical Dimensions

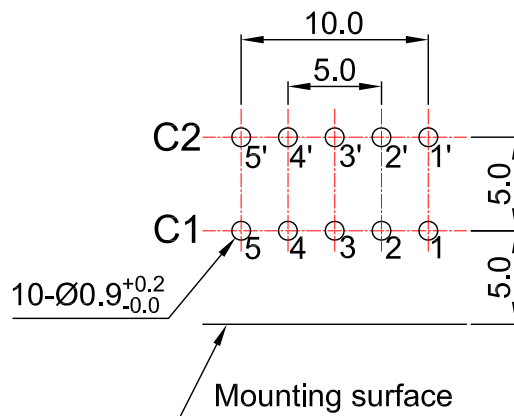





Shaft shown in full C.C.W position

接线图 Circuit explanation





安装孔位图 P.C.B. mounting hole detail



3				PRODUCT NAME	Rotary Switch	
2				MODEL NAME	RS10-15KQA1-2-3P	
1				APPROVED BY	CHECKED BY	DRAWN BY
NO	DATE	DESCRIPTION				
		DIMENSION	TOLERANCE	SCALE		
		1 < j ≤ 10	±0.2	UNIT	mm	
		10 < j ≤ 30	±0.5	VER.		
		30 < j ≤ 100	±1.0	DATE	2019/10/22	
				 R & D 2019/10/22 Eva	 R & D 2019/10/22 Sophie	 R & D 2019/10/22 Dick

10 mm Rotary Switch Specifications

1. 電氣性能 (Electrical Characteristic)								
序号	項目			特性				
1.1	額定功率 (Rated Power)			16V DC 0.1A				
1.2	絕緣阻抗 (Insulation Resistance)			100MΩ at DC 100V				
1.3	耐電壓 (Withstand Voltage)			For 1 minute at:AC 100V				
1.4	接觸電阻 (Comtact Resistance)			50mΩ max.				
2. 機械性能 (Mechanical Characteristics)								
2.1	每段角度 (Step Angle)			30°±5°				
2.2	旋轉力矩 (Rotation Torque)			500±200gf.cm				
2.3	軸的拉、押強度 (Pull-Push Strength)			6Kgf				
2.4	轉動止檔強度 (Rotational Stop-End Torque)			5kgf.cm				
2.5	焊錫耐熱性 (Resistance To Soldering Heat)			260±5°C at 3 seconds				
2.6	使用溫度範圍: (Used Temperature Range)			-10°C~+70°C				
2.7	/			/				
3. 耐久性能 (Durability)								
3.1	回轉壽命 (Rotation Life)			10,000Cycles Min				
批 准			審 核			設 計	