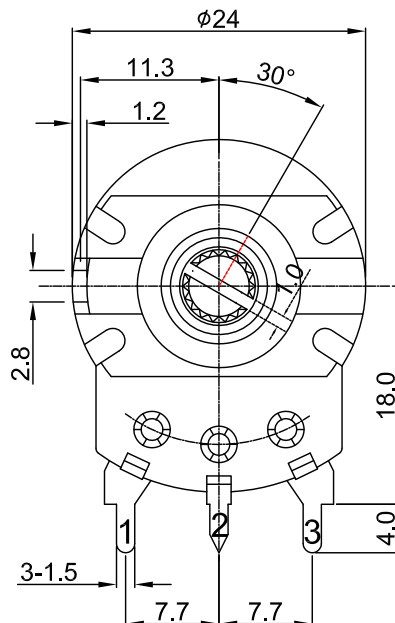
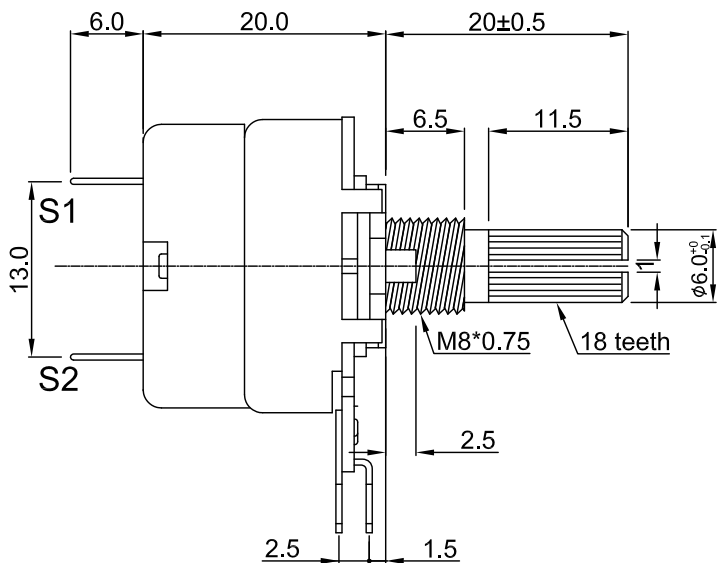
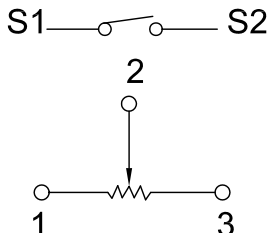


外形图 Mechanical Dimensions

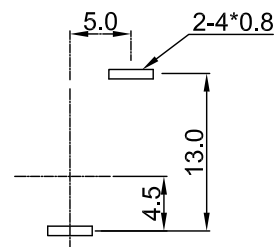


Shaft shown in full C.C.W. position

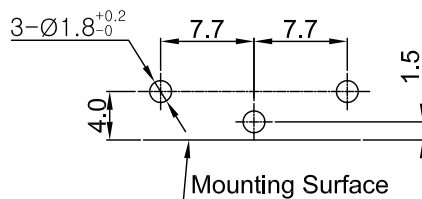
接线图 Circuit explanation



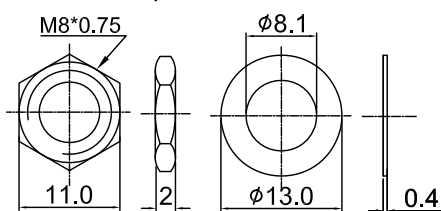
安装孔位图 P.C.B. mounting hole detail



Switch terminal mounting hole detail



Attached parts : nut & washer



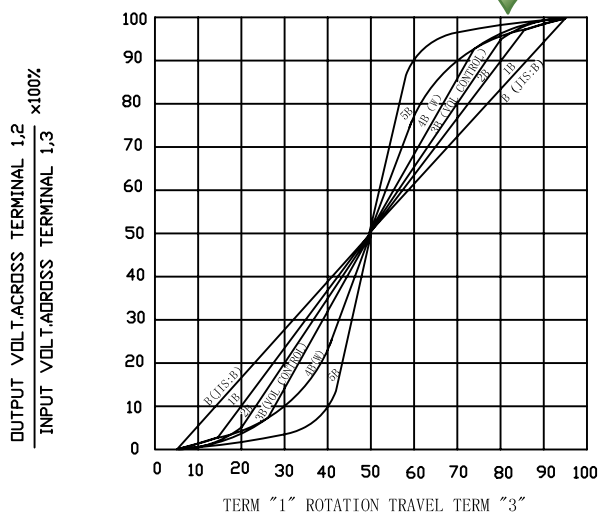
| | | | | | | |
|----|-------------------|---------------|-------|--------------|----------------------|----------|
| 3 | | | | PRODUCT NAME | Rotary Potentiometer | |
| 2 | | | | MODEL NAME | RD2410NS-3A1-Value | |
| 1 | | | | APPROVED BY | CHECKED BY | DRAWN BY |
| NO | DATE | DESCRIPTION | | | | |
| | DIMENSION | TOLERANCE | SCALE | | | |
| | $l \leq 10$ | ± 0.2 | UNIT | | | |
| | $10 < l \leq 30$ | ± 0.5 | VER. | | | |
| | $30 < l \leq 100$ | ± 1.0 | DATE | | | |
| | All Angles | $\pm 5^\circ$ | | | | |
| | | | | | | |

24 mm Rotary Series Potentiometers with SW Specifications

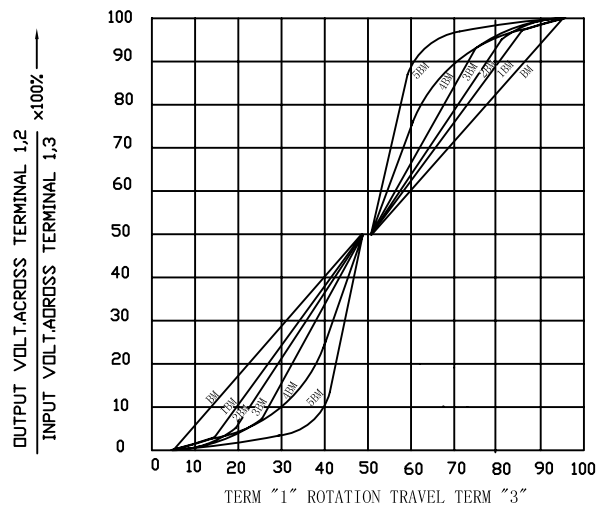
| 1. 電氣性能 (Electrical Characteristics) | | | | | |
|--------------------------------------|---|----|---|----|---|
| 1.1 | 全阻抗值 (Total Resistance) | | 500KΩ | | |
| 1.2 | 全阻抗值允許偏差 (Total Resistance Tolerance) | | ±20% (More than 1 M Ω ±30%) | | |
| 1.3 | 電阻隨溫度變化特性 Resistance of temperature change character) | | 20℃-75℃:ΔR/R≤±5%, -25℃-20℃:ΔR/R≤±4.5% | | |
| 1.4 | 阻值變化特性 (Resistance Taper) | | B | | |
| 1.5 | 零位阻值 (Residual Resistance) | | R>250KΩ / 0.1 % max. of total Value 250KΩ>R>10KΩ / 20Ω max. 10KΩ>R / 10Ω max. | | |
| 1.6 | 額定功率 (Rated Power) | | Linear Taper B: 0.5W Other Taper:0.25W | | |
| 1.7 | 最高使用電壓 (Max.Operating Voltage) | | 250V AC | | |
| 1.8 | 動雜音 (Rotational Noise) | | Less Than 100mV | | |
| 1.9 | 絕緣阻抗 (Insulation Resistance) | | More than 50MΩ at DC 500V | | |
| 1.10 | 耐電壓 (Withstand Voltage) | | For 1 minute at: AC 500V | | |
| 1.11 | 開關額定功率(Switch Rated Power) | | 1A at AC/DC 125V | | |
| 1.12 | 同步誤差 (Gang Error) | | ----- | | |
| 2. 機械性能 (Mechanical Characteristics) | | | | | |
| 2.1 | 全回轉角度 (Rotation Angle) | | 300°±10° | | |
| 2.2 | 旋轉力矩 (Rotation Torque) | | 20~200gf.cm | | |
| 2.3 | 軸的拉、押強度 (Pull-Push Strength) | | 6 Kgf.cm | | |
| 2.4 | 轉動止檔強度 (Rotational Stop-End Torque) | | 5 kgf.cm Min | | |
| 2.5 | 開關角度(Switch Working Angel) | | ≤50° | | |
| 2.6 | 開關力矩(Switch Working Torque) | | 150~450gf.cm | | |
| 2.7 | 旋轉定位數目 (Number of Detents(click)) | | detent : 0 | | |
| 2.8 | 焊錫耐熱性 (Resistance To Soldering Heat) | | 260±5℃ and less than 3 seconds | | |
| 3. 耐久性能 (Durability) | | | | | |
| 3.1 | 回轉壽命 (Rotation Life) | | 10,000 Cycles min. | | |
| 3.2 | 工作溫度 (Operating temperature) | | -10℃~+70℃ | | |
| 4.1 | 外形尺寸圖/曲線特性圖 (Shape size drawing/curve characteristic drawing) | | 見附頁 Please refer the drawing | | |
| 批准 |  | 審核 |  | 設計 |  |

RESISTANCE TAPER

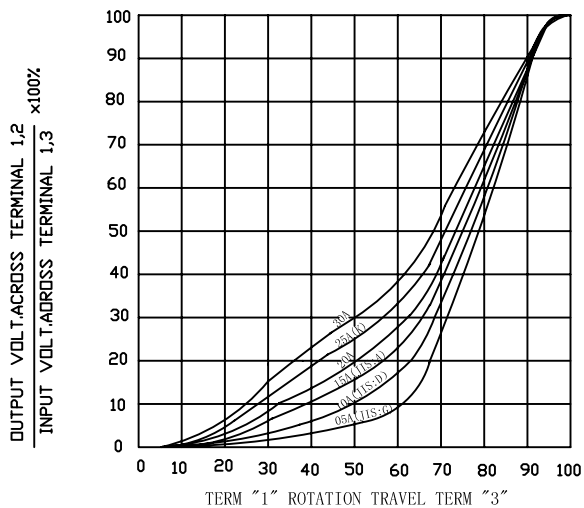
TAPER B SERIES



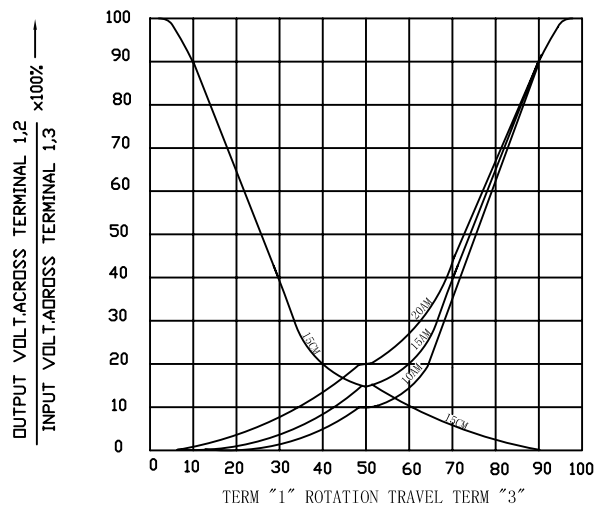
TAPER B WITH 50% TAP



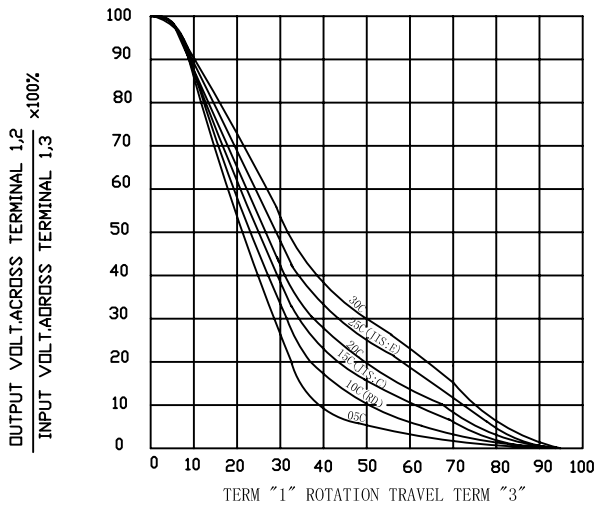
TAPER A SERIES



TAPER A & C WITH 50% TAP



TAPER C SERIES



TAPER M & N SERIES

