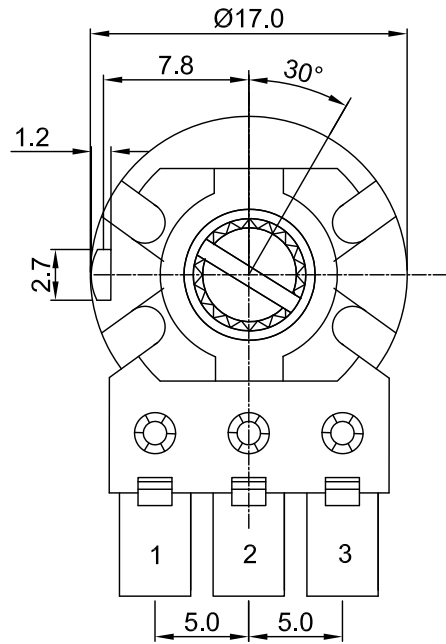
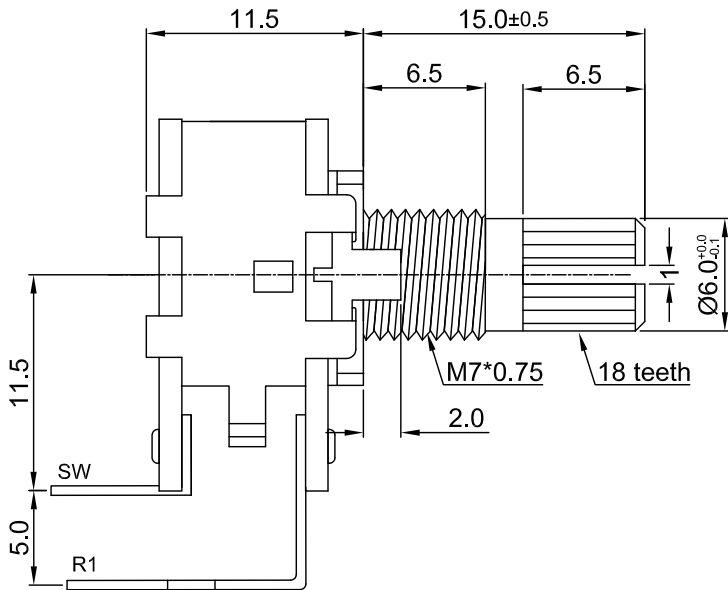
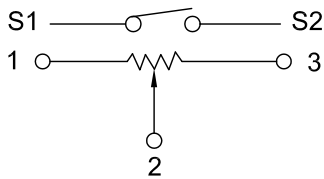


外形图 Mechanical Dimensions

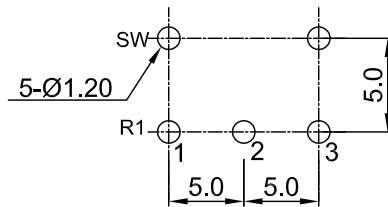


Shaft shown in full C.C.W. position

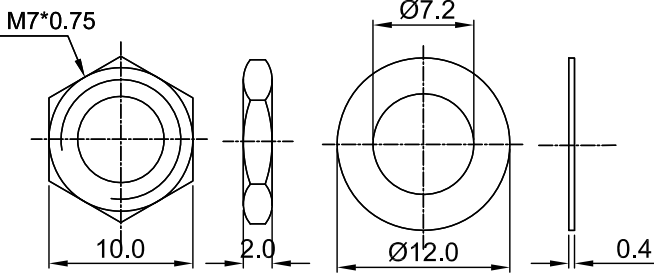
接线图 Circuit explanation



安装孔位置图
P.C.B. mounting hole detail



Attached parts : nut & washer



3				PRODUCT NAME	Rotary Potentiometer	
2				MODEL NAME	RD1620S-2D1-value	
1				APPROVED BY	CHECKED BY	DRAWN BY
NO	DATE	DESCRIPTION				
DIMENSION	TOLERANCE	SCALE				
$\int \leq 10$	± 0.2	UNIT	mm	<div style="border: 1px solid black; border-radius: 50%; padding: 5px; width: 60px; margin: 0 auto;"> R & D 2014/3/6 Eva </div>	<div style="border: 1px solid black; border-radius: 50%; padding: 5px; width: 60px; margin: 0 auto;"> R & D 2014/3/6 Sophie </div>	<div style="border: 1px solid black; border-radius: 50%; padding: 5px; width: 60px; margin: 0 auto;"> R & D 2014/3/6 Ball </div>
$10 < \int \leq 30$	± 0.5	VER.	A0			
$30 < \int \leq 100$	± 1.0	DATE	2013/05/31			
All Angles	$\pm 5^\circ$					

16 mm Rotary Potentiometers with SW series Specifications

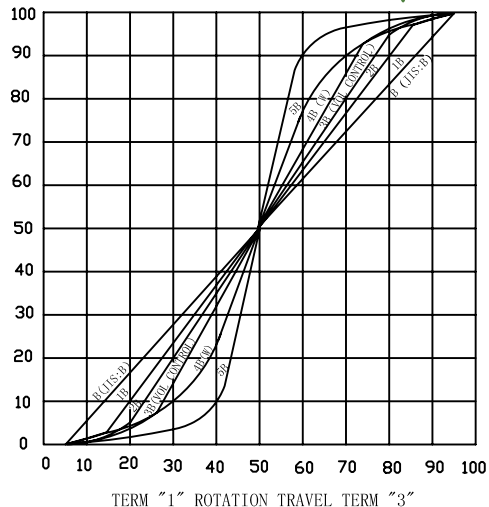
1. 電氣性能 (Electrical Characteristics)					
1.1	全阻抗值 (Total Resistance)		1K Ω ~ 2M Ω		
1.2	全阻抗值允許偏差 (Total Resistance Tolerance)		$\pm 20\%$ (More than 1 M Ω $\pm 30\%$)		
1.3	電阻隨溫度變化特性 (Resistance of temperature change character)		20 $^{\circ}$ C -75 $^{\circ}$ C : $\Delta R/R \leq \pm 5\%$, -25 $^{\circ}$ C -20 $^{\circ}$ C : $\Delta R/R \leq \pm 4.5\%$		
1.4	阻值變化特性 (Resistance Taper)		A, B, C, W		
1.5	零位阻值 (Residual Resistance)		R > 250K Ω / 0.1 % max. of total Value 250K Ω > R > 10K Ω / 20 Ω max. 10K Ω > R / 10 Ω max.		
1.6	額定功率 (Rated Power)		Linear Taper B: 0.2W Other Taper: 0.1W		
1.7	最高使用電壓 (Max. Operating Voltage)		150VAC		
1.8	動雜音 (Rotational Noise)		Less Than 100mV		
1.9	絕緣阻抗 (Insulation Resistance)		More than 100M Ω at DC 500V		
1.10	耐電壓 (Withstand Voltage)		For 1 minute at: AC 500V		
1.11	開關額定功率 (Switch Rated Power)		DV 12V , 1.0A max		
2. 機械性能 (Mechanical Characteristics)					
2.1	全回轉角度 (Rotation Angle)		300 $^{\circ}$ $\pm 5^{\circ}$		
2.2	旋轉力矩 (Rotation Torque)		20 ~ 200gf.cm		
2.3	軸的拉、押強度 (Pull-Push Strength)		8 Kgf.cm		
2.4	轉動止檔強度 (Rotational Stop-End Torque)		6 kgf.cm Min		
2.5	開關角度 (Switch Working Angel)		50 $^{\circ}$ $\pm 10^{\circ}$		
2.6	開關力矩 (Switch Working Torque)		50 ~ 150gf.cm		
2.7	旋轉定位數目 (Number of Detents (click))		0 detent		
2.8	焊錫耐熱性 (Resistance To Soldering Heat)		260 $\pm 5^{\circ}$ C and less than 3 seconds		
3. 耐久性能 (Durability)					
3.1	回轉壽命 (Rotation Life)		10,000 Cycles min.		
3.2	工作溫度 (Operating temperature)		-10 $^{\circ}$ C ~ +70 $^{\circ}$ C		
4.1	外形尺寸圖/曲線特性圖 (Shape size drawing/curve characteristic drawing)		見附頁 Please refer the drawing		
批 准			審 核		
			設 計		

RESISTANCE TAPER

TAPER B SERIES

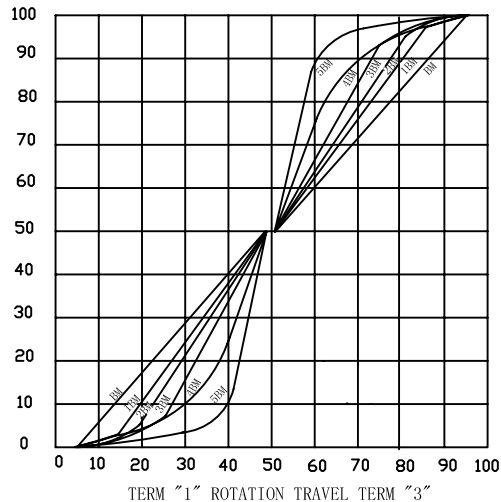


$$\frac{\text{OUTPUT VOLT.ACROSS TERMINAL 1,2}}{\text{INPUT VOLT.ACROSS TERMINAL 1,3}} \times 100\%$$



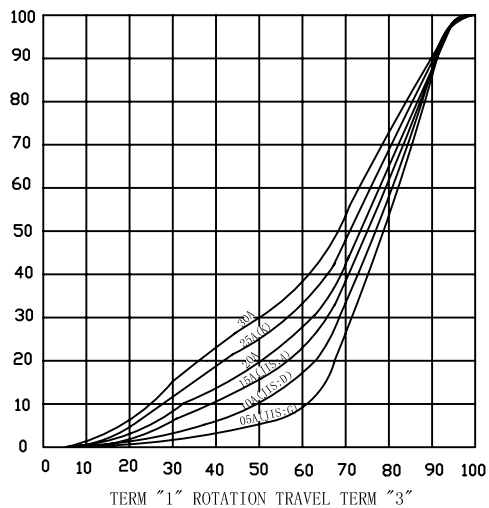
TAPER B WITH 50% TAP

$$\frac{\text{OUTPUT VOLT.ACROSS TERMINAL 1,2}}{\text{INPUT VOLT.ACROSS TERMINAL 1,3}} \times 100\%$$



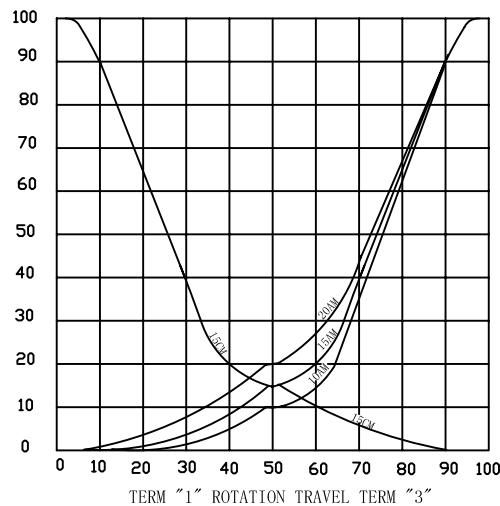
TAPER A SERIES

$$\frac{\text{OUTPUT VOLT.ACROSS TERMINAL 1,2}}{\text{INPUT VOLT.ACROSS TERMINAL 1,3}} \times 100\%$$



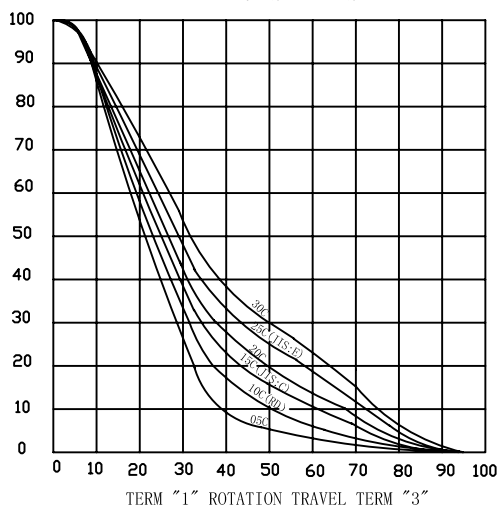
TAPER A & C WITH 50% TAP

$$\frac{\text{OUTPUT VOLT.ACROSS TERMINAL 1,2}}{\text{INPUT VOLT.ACROSS TERMINAL 1,3}} \times 100\%$$



TAPER C SERIES

$$\frac{\text{OUTPUT VOLT.ACROSS TERMINAL 1,2}}{\text{INPUT VOLT.ACROSS TERMINAL 1,3}} \times 100\%$$



TAPER M & N SERIES

$$\begin{matrix} \text{M} & \frac{\text{OUTPUT VOLT.ACROSS TERMINAL 1,2}}{\text{INPUT VOLT.ACROSS TERMINAL 1,3}} \times 100\% \\ \text{N} & \frac{\text{OUTPUT VOLT.ACROSS TERMINAL 1,2}}{\text{INPUT VOLT.ACROSS TERMINAL 1,3}} \times 100\% \end{matrix}$$

