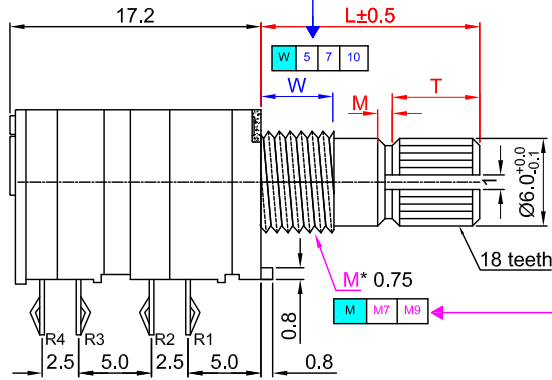


# 9mm common drawing

Model No. R0940G-xA1-Wy-Mz taper value



Technical drawing showing dimensions and model code breakdown:

**KQ type** (W(5,7,10))

W=5mm	W=7mm	W=10mm																																																																
<table border="1"> <tr><th>X</th><th>0</th><th>1</th><th>2</th><th>4</th><th>5</th></tr> <tr><th>L</th><td>10</td><td>12</td><td>15</td><td>20</td><td>25</td></tr> <tr><th>T</th><td>3.5</td><td>5.0</td><td>6.0</td><td>12</td><td>12</td></tr> <tr><th>M</th><td>0.5</td><td>0.5</td><td>1.0</td><td>1.0</td><td>2.0</td></tr> </table>	X	0	1	2	4	5	L	10	12	15	20	25	T	3.5	5.0	6.0	12	12	M	0.5	0.5	1.0	1.0	2.0	<table border="1"> <tr><th>X</th><th>1</th><th>2</th><th>4</th><th>5</th><th>6</th></tr> <tr><th>L</th><td>12</td><td>15</td><td>20</td><td>25</td><td>30</td></tr> <tr><th>T</th><td>3.5</td><td>6.0</td><td>12</td><td>12</td><td>12</td></tr> <tr><th>M</th><td>0.5</td><td>0.5</td><td>1.0</td><td>1.0</td><td>1.0</td></tr> </table>	X	1	2	4	5	6	L	12	15	20	25	30	T	3.5	6.0	12	12	12	M	0.5	0.5	1.0	1.0	1.0	<table border="1"> <tr><th>X</th><th>2</th><th>4</th><th>5</th></tr> <tr><th>L</th><td>15</td><td>20</td><td>25</td></tr> <tr><th>T</th><td>3.5</td><td>6.0</td><td>12</td></tr> <tr><th>M</th><td>0.5</td><td>1.0</td><td>1.0</td></tr> </table>	X	2	4	5	L	15	20	25	T	3.5	6.0	12	M	0.5	1.0	1.0
X	0	1	2	4	5																																																													
L	10	12	15	20	25																																																													
T	3.5	5.0	6.0	12	12																																																													
M	0.5	0.5	1.0	1.0	2.0																																																													
X	1	2	4	5	6																																																													
L	12	15	20	25	30																																																													
T	3.5	6.0	12	12	12																																																													
M	0.5	0.5	1.0	1.0	1.0																																																													
X	2	4	5																																																															
L	15	20	25																																																															
T	3.5	6.0	12																																																															
M	0.5	1.0	1.0																																																															

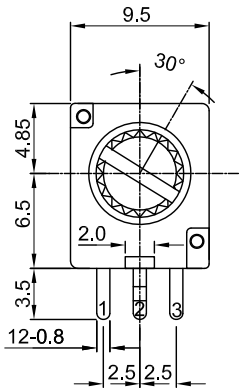
**F type** (W(5,7,10))

W=5mm	W=7mm	W=10mm																																																			
<table border="1"> <tr><th>X</th><th>A</th><th>C</th><th>D</th><th>G</th><th>E</th></tr> <tr><th>L</th><td>15</td><td>20</td><td>25</td><td>12</td><td>30</td></tr> <tr><th>F</th><td>7.0</td><td>12</td><td>12</td><td>5.0</td><td>12</td></tr> </table>	X	A	C	D	G	E	L	15	20	25	12	30	F	7.0	12	12	5.0	12	<table border="1"> <tr><th>X</th><th>A</th><th>C</th><th>D</th><th>G</th><th>E</th><th>F</th></tr> <tr><th>L</th><td>15</td><td>20</td><td>25</td><td>12</td><td>30</td><td>12.5</td></tr> <tr><th>F</th><td>7.0</td><td>12</td><td>12</td><td>4.0</td><td>12</td><td>4.0</td></tr> </table>	X	A	C	D	G	E	F	L	15	20	25	12	30	12.5	F	7.0	12	12	4.0	12	4.0	<table border="1"> <tr><th>X</th><th>A</th><th>C</th><th>D</th></tr> <tr><th>L</th><td>15</td><td>20</td><td>25</td></tr> <tr><th>F</th><td>4.0</td><td>7.0</td><td>12</td></tr> </table>	X	A	C	D	L	15	20	25	F	4.0	7.0	12
X	A	C	D	G	E																																																
L	15	20	25	12	30																																																
F	7.0	12	12	5.0	12																																																
X	A	C	D	G	E	F																																															
L	15	20	25	12	30	12.5																																															
F	7.0	12	12	4.0	12	4.0																																															
X	A	C	D																																																		
L	15	20	25																																																		
F	4.0	7.0	12																																																		

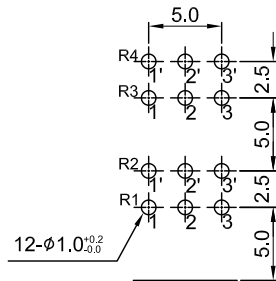
**S type** (W(5,7,10))

W=5mm	W=7mm	W=10mm																																
<table border="1"> <tr><th>X</th><th>P</th><th>Q</th><th>R</th><th>S</th><th>T</th></tr> <tr><th>L</th><td>10</td><td>15</td><td>20</td><td>25</td><td>30</td></tr> </table>	X	P	Q	R	S	T	L	10	15	20	25	30	<table border="1"> <tr><th>X</th><th>P</th><th>Q</th><th>R</th><th>S</th><th>T</th></tr> <tr><th>L</th><td>10</td><td>15</td><td>20</td><td>25</td><td>30</td></tr> </table>	X	P	Q	R	S	T	L	10	15	20	25	30	<table border="1"> <tr><th>X</th><th>Q</th><th>R</th><th>S</th></tr> <tr><th>L</th><td>15</td><td>20</td><td>25</td></tr> </table>	X	Q	R	S	L	15	20	25
X	P	Q	R	S	T																													
L	10	15	20	25	30																													
X	P	Q	R	S	T																													
L	10	15	20	25	30																													
X	Q	R	S																															
L	15	20	25																															

安装孔位置图  
P.C.B. mounting hole detail

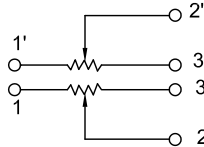


Shaft shown in full C.C.W. position

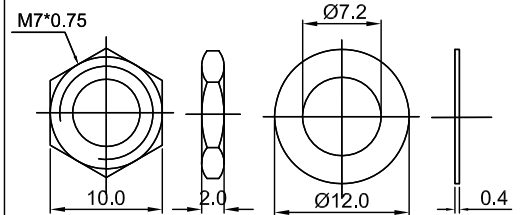


Mounting surface

接线图  
Circuit explanation



Attached parts : nut & washer



# 9 mm Rotary Potentiometers series Specifications

1.電氣性能 (Electrical Characteristics)		
1.1	全阻抗值 (Total Resistance)	1KΩ ~ 2MΩ
1.2	全阻抗值允許偏差 (Total Resistance Tolerance)	±20% ( More than 1 M Ω ±30%)
1.3	電阻隨溫度變化特性 Resistance of temperature change character)	20℃-75℃:△R/R≤±5%, -25℃-20℃:△R/R≤±4.5%
1.4	阻值變化特性 (Resistance Taper)	A, B , C, W
1.5	零位阻值 (Residual Resistance)	R>250KΩ / 0.1 % max. of total Value 250KΩ>R>10KΩ / 20Ω max. 10KΩ>R / 10Ω max.
1.6	額定功率 (Rated Power)	Linear Taper B: 0.05W Other Taper:0.025W
1.7	最高使用電壓 (Max.Operating Voltage)	50V AC
1.8	動雜音 (Rotational Noise)	Less Than 100mV
1.9	絕緣阻抗 (Insulation Resistance)	More than 100MΩ at DC 250V
1.10	耐電壓 (Withstand Voltage)	For 1 minute at: AC 250V
1.11	開關額定功率(Switch Rated Power)	-----
1.12	同步誤差 (Gang Error)	-40dB~0dB≤3dB
2.機械性能 (Mechanical Characteristics)		
2.1	全回轉角度 (Rotation Angle)	300°±10°
2.2	旋轉力矩 (Rotation Torque)	10~200gf.cm
2.3	軸的拉、押強度 (Pull-Push Strength)	4 Kgf.cm
2.4	轉動止檔強度 (Rotational Stop-End Torque)	3 kgf.cm Min
2.5	開關角度(Switch Working Angel)	-----
2.6	開關力矩(Switch Working Torque)	-----
2.7	旋轉定位數目 (Number of Detents(click))	detent: 0, centre, 11, 21, 31, 41
2.8	焊錫耐熱性 (Resistance To Soldering Heat)	260±5℃ and less than 3 seconds
3.耐久性能 (Durability)		
3.1	回轉壽命 (Rotation Life)	10,000 Cycles min.
3.2	工作溫度 (Operating temperature)	-10℃~+70℃
4.1	外形尺寸圖/曲線特性圖 (Shape size drawing/curve characteristic drawing)	見附頁 Please refer the drawing