
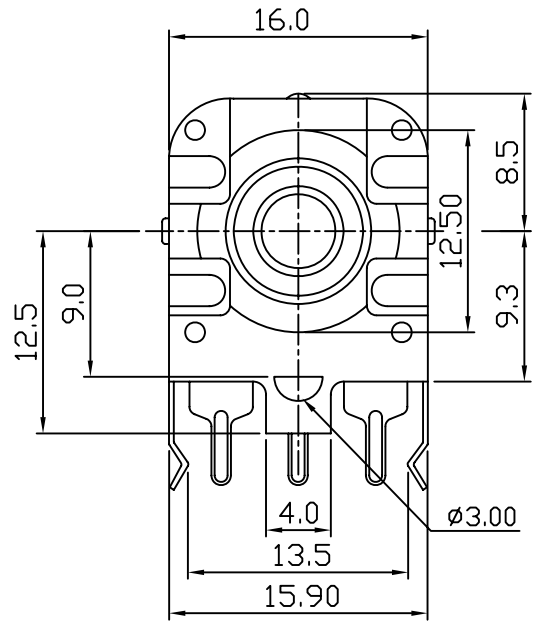
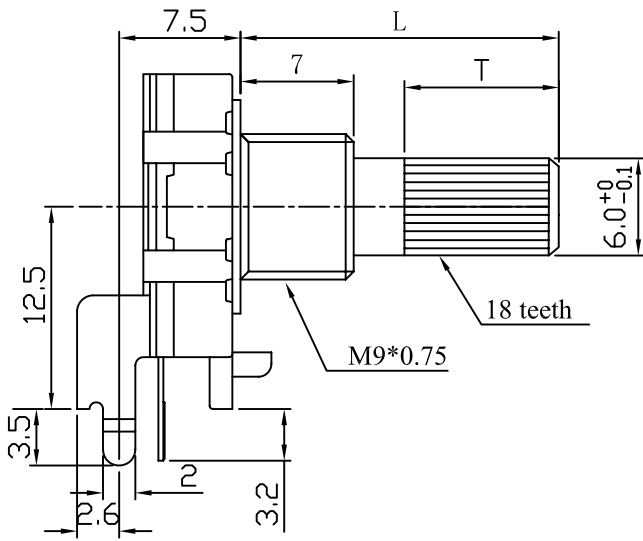


一、旋轉式編碼器系列技術規格書

Rotary Series Encoders Technic Specifications

1. 機械性能 (Mechanical Characteristics)				
序号	項目			特性
1.1	全回轉角度 (Total rotational angle)			360°
1.2	定位點力矩 (Detent torque)			20-40mN.m (200-400gf.cm)
1.3	軸的推拉強度 (Push-pull strength of shaft)			8KGF
1.4	定位點數 (Number of detent)			24 detents
1.5	開關動作力 (Operation force of switch)			0.5kgf max.
1.6	軸擺動 (Shaft wobble)			5*L/30mm p-p max.
2. 電氣性能 (Electrical Characteristics)				
2.1	額定值 (Rating)			5V DC, 10mA
2.2	耐電壓 (Dielectric strength)			For 1minute or more at:AC300V
2.3	絕緣電阻 (Insulation resistance)			10MΩ Min
2.4	接觸電阻 (Contact resistance)			500Ω Max.
2.5	分解能力 (Resolution)			24個脈沖/360° (24pulses/360 for each phase)
2.6	相差位 (Phase difference)			0.15T ± 0.1T (Must be measured without detent)
3. 耐久性能 (Endurance Characteristics)				
3.1	回轉壽命 (Rotational life)			100,000cycles
批 准		審 核		設 計
				

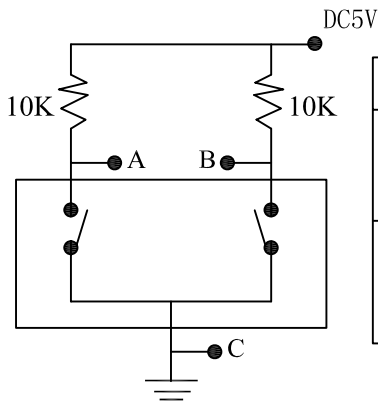
外形圖 Mechanical Dimensions



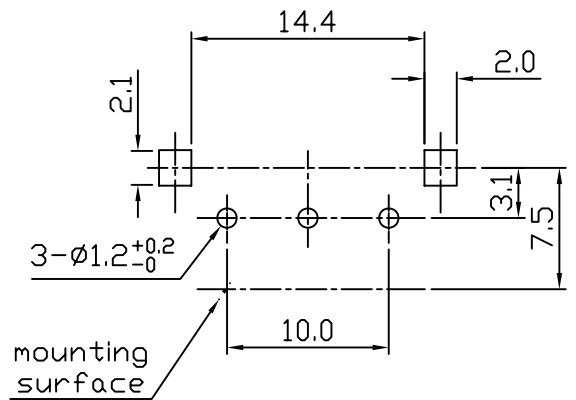
接線圖
Circuit Explanation

輸出信號
Output Signal Format

安裝孔位置圖
Mounting Hole



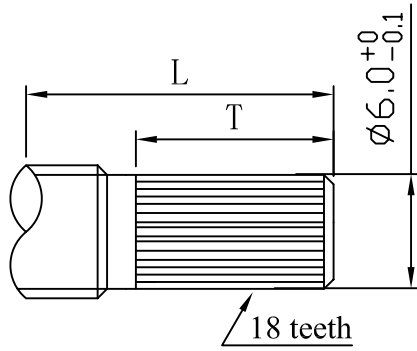
旋轉方向 Shaft rotational direction	信號 Signal	輸出波形 (Output)
逆時針方向 C. W	(A-C端子間) A(Terminal A-C)	OFF
	(B-C端子間) B(Terminal B-C)	ON
順時針方向 C. C. W	(A-C端子間) A(Terminal A-C)	OFF
	(B-C端子間) B(Terminal B-C)	ON



3				PRODUCT NAME	Encoder	
2				MODEL NAME	R162EC-□D1-□ X Y	
1				APPROVED BY	CHECKED BY	DRAWN BY
NO	DATE	DESCRIPTION				
	DIMENSION	TOLERANCE	SCALE			
	$l \leq 10$	± 0.2	UNIT	mm		
	$10 < l \leq 30$	± 0.5	VER.			
	$30 < l \leq 100$	± 1.0	DATE	07/06/07		

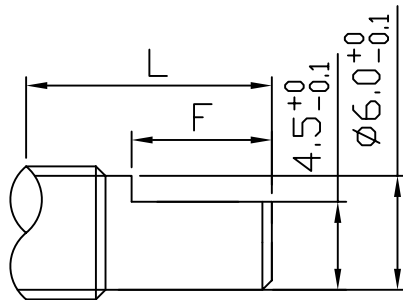
R & D
2010.12.01
Sam

R162EC SERIES SHAFT TYPE



KQ TYPE:

X	15KQ	20KQ	25KQ	
L	15	20	25	
T	7	12	12	



F TYPE:

X	15F	20F	25F	
L	15	20	25	
F	7	12	12	

