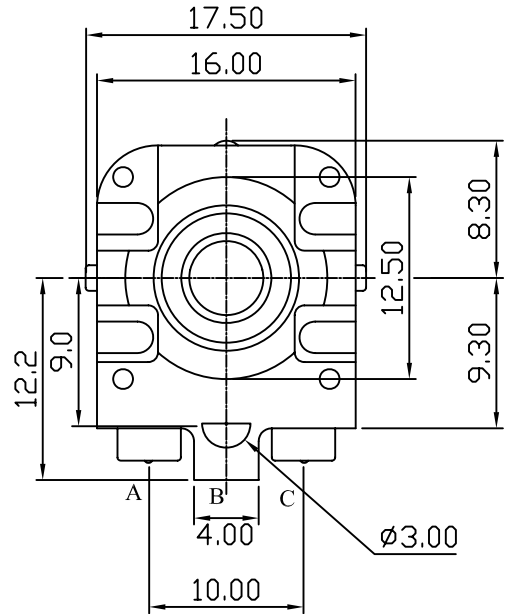
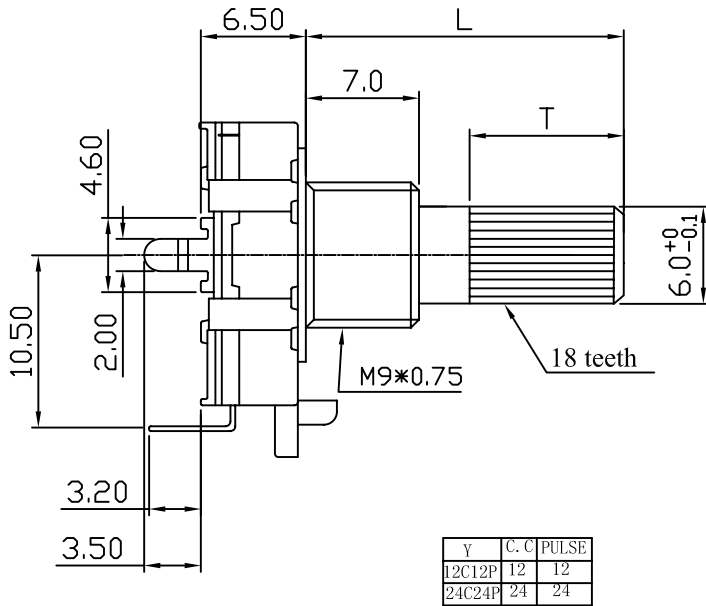


# 一、旋轉式編碼器系列技術規格書

## Rotary Series Encoders Technic Specifications

1. 機械性能 (Mechanical Characteristics)					
序号	項目			特性	
1.1	全回轉角度 (Total rotational angle)			360°	
1.2	定位點力矩 (Detent torque)			20-40mN.m (200-400gf.cm)	
1.3	軸的推拉強度 (Push-pull strength of shaft)			8KGF	
1.4	定位點數 (Number of detent)			24 detents	
1.5	開關動作力 (Operation force of switch)			0.5kgf max.	
1.6	軸擺動 (Shaft wobble)			5*L/30mm p-p max.	
2. 電氣性能 (Electrical Characteristics)					
2.1	額定值 (Rating)			5V DC, 10mA	
2.2	耐電壓 (Dielectric strength)			For 1minute or more at:AC300V	
2.3	絕緣電阻 (Insulation resistance)			10MΩ Min	
2.4	接觸電阻 (Contact resistance)			500Ω Max.	
2.5	分解能力 (Resolution)			24個脈沖/360° (24pulses/360 for each phase)	
2.6	相差位 (Phase difference)			0.15T±0.1T (Must be measured without detent)	
3. 耐久性能 (Endurance Characteristics)					
3.1	回轉壽命 (Rotational life)			100,000cycles	
批 准			審 核		
				設 計	

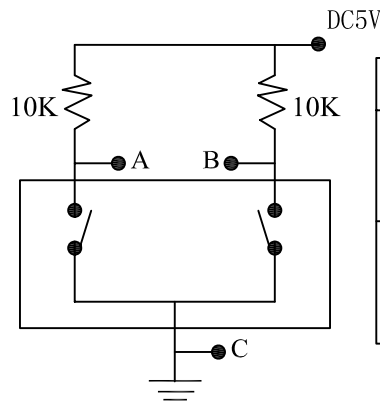
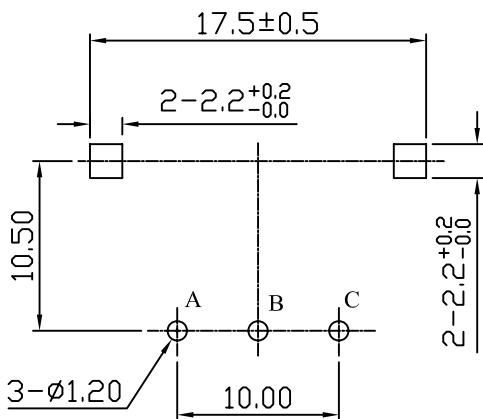
# 外形圖 Mechanical Dimensions



安裝孔位置圖  
Mounting Hole

接線圖  
Circuit Explanation

輸出信號  
Output Signal Format

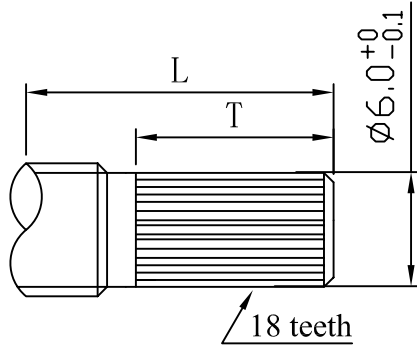


轉動方向 Shaft rotational direction	信號 Signal	輸出波形 (Output)
逆時針方向 C. W	(A-C端子間) A(Terminal A-C) B(B-C端子間) B(Terminal B-C)	OFF ON OFF ON
順時針方向 C. C. W	(A-C端子間) A(Terminal A-C) B(B-C端子間) B(Terminal B-C)	OFF ON OFF ON

3				PRODUCT NAME	Encoder	
2				MODEL NAME	R162EC-□D1-□ X Y	
1				APPROVED BY	CHECKED BY	DRAWN BY
NO	DATE	DESCRIPTION				
		DIMENSION	TOLERANCE	SCALE		
		$l \leq 10$	$\pm 0.2$	UNIT	mm	
		$10 < l \leq 30$	$\pm 0.5$	VER.		
		$30 < l \leq 100$	$\pm 1.0$	DATE	07/06/07	

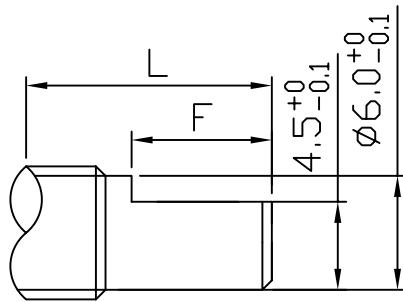
**R & D**  
 2010.12.01  
 Sam

# R162EC SERIES SHAFT TYPE



KQ TYPE:

X	15KQ	20KQ	25KQ	
L	15	20	25	
T	7	12	12	



F TYPE:

X	15F	20F	25F	
L	15	20	25	
F	7	12	12	

