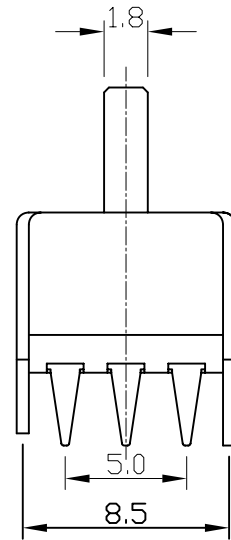
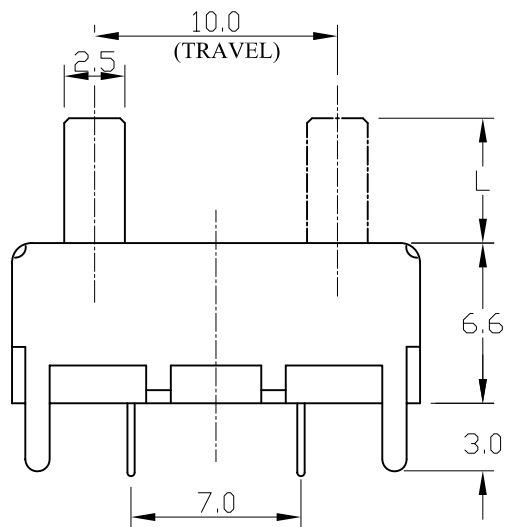
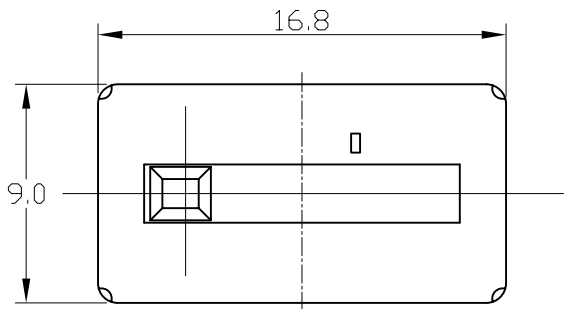


一、直滑式電位器系列技術規格書

Slide Potentiometers Technic Specifications

1. 電氣性能 (Electrical Characteristic)						
序号	項目			特性		
1.1	全阻抗值 (Total Resistance)			1K~1MΩ		
1.2	全阻抗值允許偏差 (Total Resistance Tolerance)			±20%		
1.3	電阻隨溫度變化特性 (Resistance of temperature change character)			20℃-75℃: $\Delta R/R \leq \pm 5\%$, -25℃-20℃: $\Delta R/R \leq \pm 4.5\%$		
1.4	阻值變化特性 (Resistance Taper)			B		
1.5	零位阻值 (Residual Resistance)			$R \geq 250K\Omega$ 0.1%max. of total resistance $250K\Omega > R > 10K\Omega$ 20Ω $10K\Omega \geq R$ 10Ω max.		
1.6	額定功率 (Rated Power)			Taper B: 0.05W Other taper: 0.025W		
1.7	最高使用電壓 (Max. Operating Voltage)			AC 100V		
1.8	動雜音 (Rotational Noise)			Less than 100mV		
1.9	絕緣阻抗 (Insulation Resistance)			10MΩ at 250V DC		
1.10	耐電壓 (WithStand Voltage)			For 1 minute at: 100V		
1.11	同步誤差 (Gang Error)			0dB~-40dB ≤3dB		
2. 機械性能 (Mechanical Characteristics)						
2.2	滑動力矩 (Operating force)			10~200gf. cm		
2.3	柄的拉、押強度 (Pull-Push Strength)			3Kgf		
2.4	止檔強度 (Stopper strength)			1Kgf. cm. max		
2.5	定位點位置 (Click Position)			C		
2.6	柄的搖動量 (Lever Wobble)			2(2*L)/20mm max, (L=軸長)		
2.7	焊錫耐熱性 (Resistance To Soldering Heat)			$260 \pm 5^\circ\text{C}$ and less than 3 seconds		
3. 耐久性能 (Durability)						
3.1	滑動壽命 (Sliding Life)			10,000 Cycles		
4. 外形尺寸圖/曲線特性圖 (Shape size drawing/curve characteristic drawing)				見附頁 (Please see attachment)		
批 准		審 核			設 計	

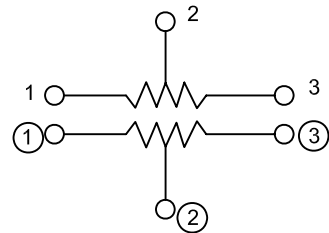
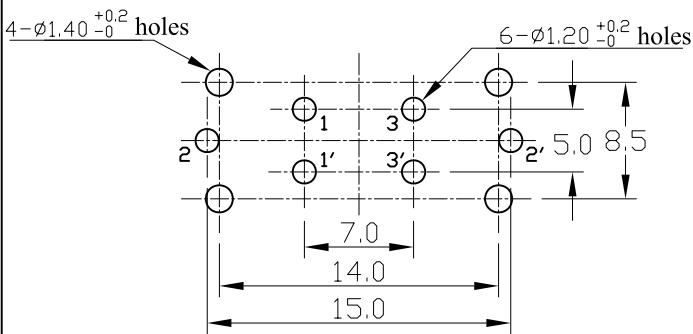
外形圖
Mechanical Dimensions



安裝孔位置圖
Mounting Hole

X	1	2	3	4
L	2.5	5.0	10	3.0

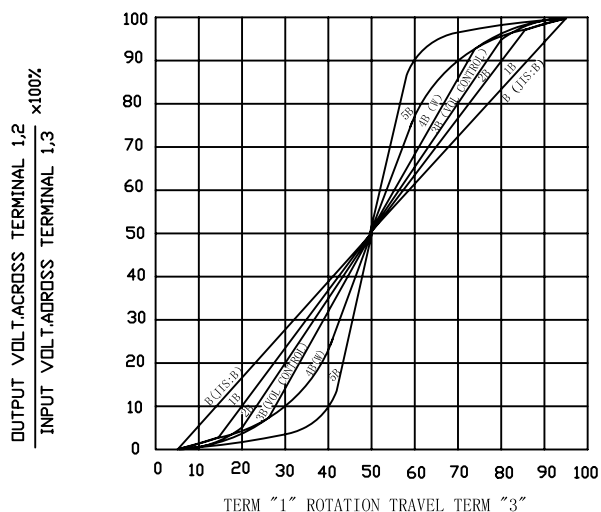
接線圖
Circuit Explanation



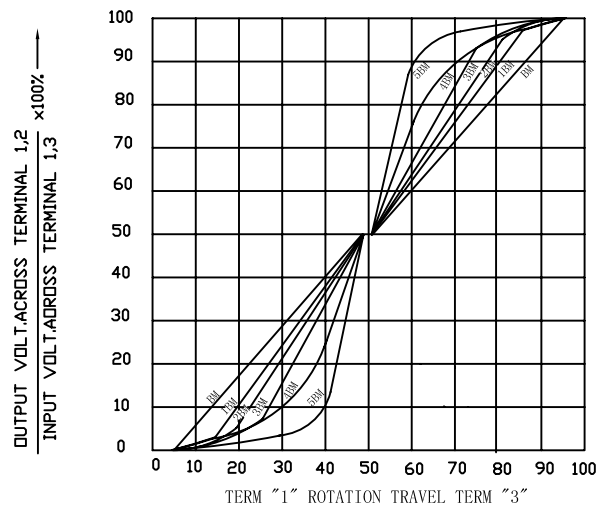
3				PRODUCT NAME	直滑电位器	
2				MODEL NAME	C1001G-□A1-Value X	
1				APPROVED BY	CHECKED BY	DRAWN BY
NO	DATE	DESCRIPTION				
		DIMENSION	TOLERANCE	SCALE		
		$l \leq 10$	± 0.2	UNIT	mm	
		$10 < l \leq 30$	± 0.5	VER.		
		$30 < l \leq 100$	± 1.0	DATE	07/06/02	

RESISTANCE TAPER

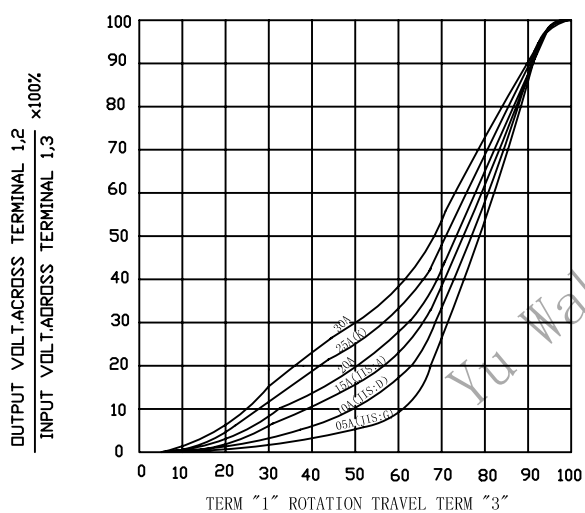
TAPER B SERIES



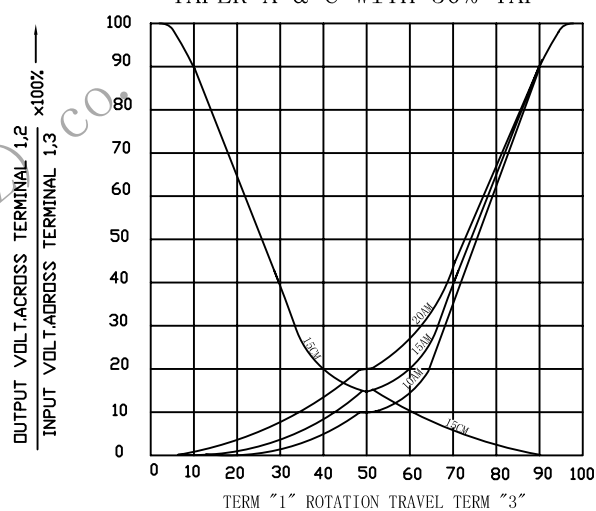
TAPER B WITH 50% TAP



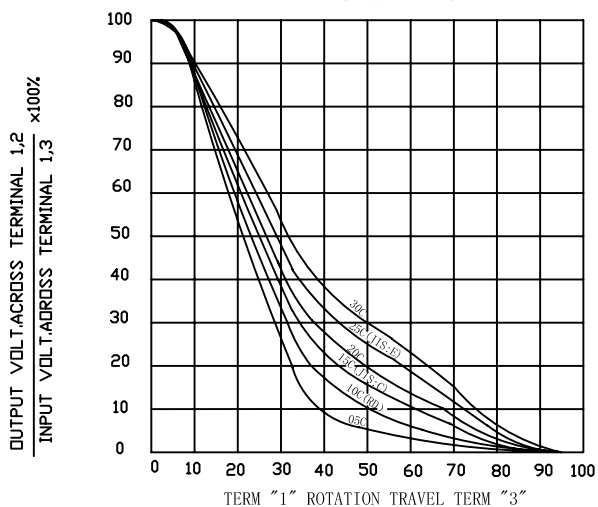
TAPER A SERIES



TAPER A & C WITH 50% TAP



TAPER C SERIES



TAPER M & N SERIES

