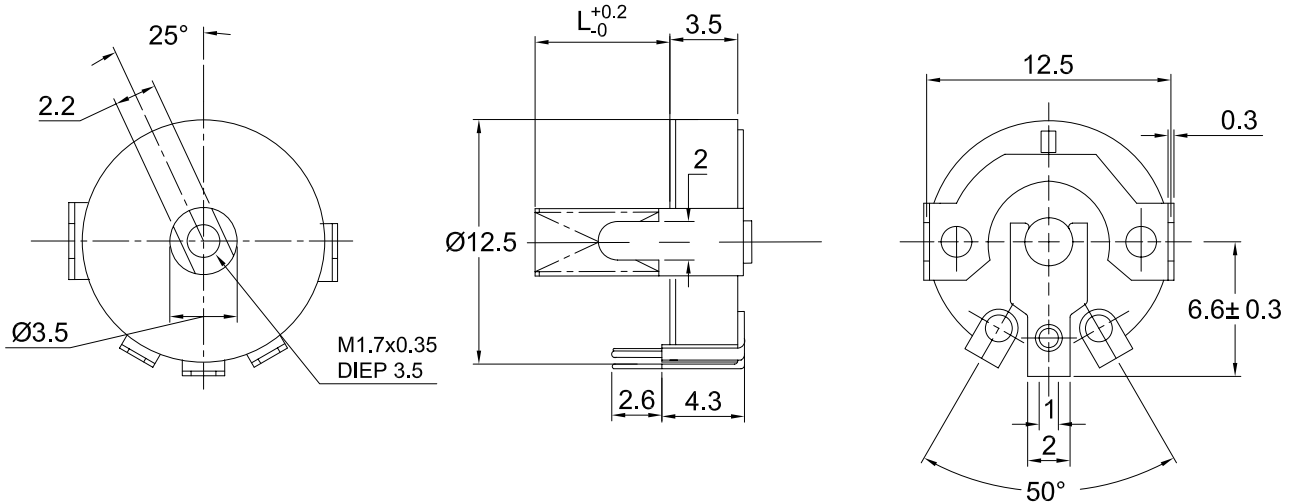
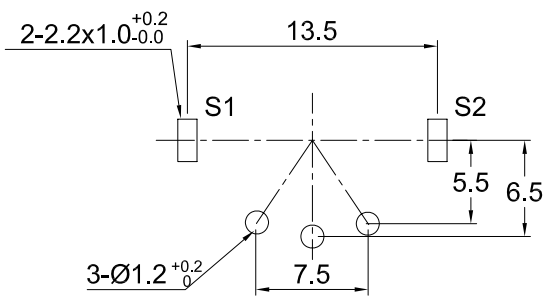


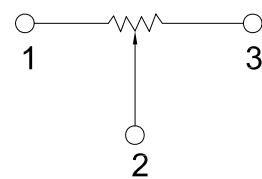
# 外形圖 Mechanical Dimensions



安裝孔位置圖  
Mounting Hole



接線圖  
Circuit Explanation



3				PRODUCT NAME	旋轉電位器		
2				MODEL NAME	R127N- <input type="text"/> C1-Value		
1							
NO	DATE	DESCRIPTION		APPROVED BY	CHECKED BY	DRAWN BY	
		DIMENSION	TOLERANCE	SCALE			
		$l \leq 10$	$\pm 0.2$	UNIT			
		$10 < l \leq 30$	$\pm 0.5$	VER.			
		$30 < l \leq 100$	$\pm 1.0$	DATE			
				07/07/02			



YU WAH ( S Z ) CO., LTD



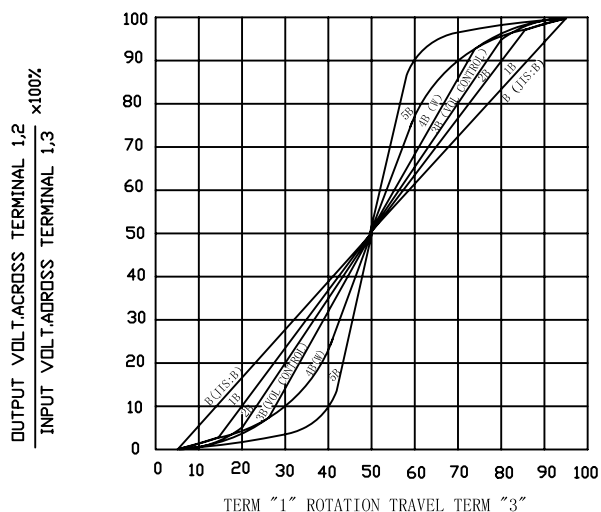
# 一、旋轉式電位器系列技術規格書

## Rotary Series Potentiometers Technic Specifications

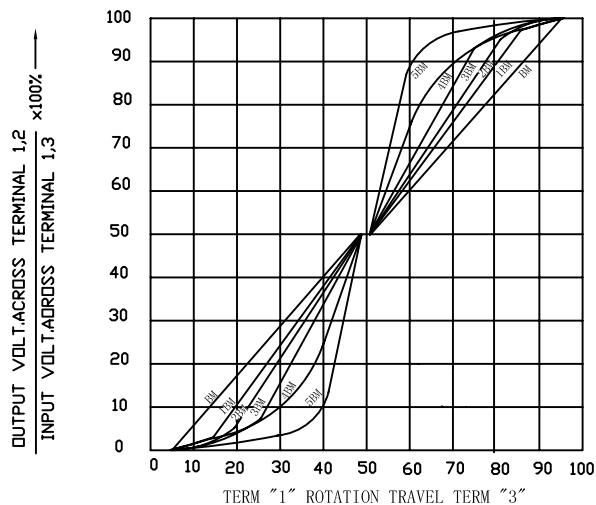
1. 電氣性能 (Electrical Characteristic)					
序号	項目			特性	
1.1	全阻抗值 (Total Resistance)			1KΩ ~ 1MΩ	
1.2	全阻抗值允許偏差 (Total Resistance Tolerance)			± 20%	
1.3	電阻隨溫度變化特性 (Resistance of temperature change character)			20℃-75℃: $\Delta R/R \leq \pm 5\%$ , -25℃-20℃: $\Delta R/R \leq \pm 4.5\%$	
1.4	阻值變化特性 (Resistance Taper)			A, B, C	
1.5	零位阻值 (Residual Resistance)			Term 1~2: Less than 10Ω Term 2~3: Less than 20Ω	
1.6	額定功率 (Rated Power)			Taper B: 0.1W Other taper: 0.05W	
1.7	最高使用電壓 (Max. Operating Voltage)			Taper B: AC 150V Other taper: AC 100V	
1.8	動雜音 (Rotational Noise)			Less than 47mV	
1.9	絕緣阻抗 (Insulation Resistance)			More than 50MΩ at DC500V	
1.10	耐電壓 (With Stand Voltage)			1 minute at: AC500V	
1.11	開關接觸電阻 (Switch Contact Resistance)			/	
1.12	開關的額定功率 (Switch Rated Power)			/	
2. 機械性能 (Mechanical Characteristics)					
2.1	全回轉角度 (Rotation Angle)			260° ± 10°	
2.2	旋轉力矩 (Rotation Torque)			20~150gf.cm	
2.3	軸的拉、押強度 (Pull-Push Strength)			1Kgf.cm	
2.4	轉動止檔強度 (Rotational Stop-End Torque)			2kgf.cm	
2.6	焊錫耐熱性 (Resistance To Soldering Heat)			260 ± 5℃ and less than 3 seconds	
2.7	開關旋轉角度 (Switch Rotational angle)			/	
2.8	開關操作力 (Switch Action)			/	
3. 耐久性能 (Durability)					
3.1	回轉壽命 (Rotation Life)			10,000Cycles	
4. 外形尺寸圖/曲線特性圖 (Shape size drawing/curve characteristic drawing)				見附頁 (Please see attachment)	
批 准		審 核		設 計	

# RESISTANCE TAPER

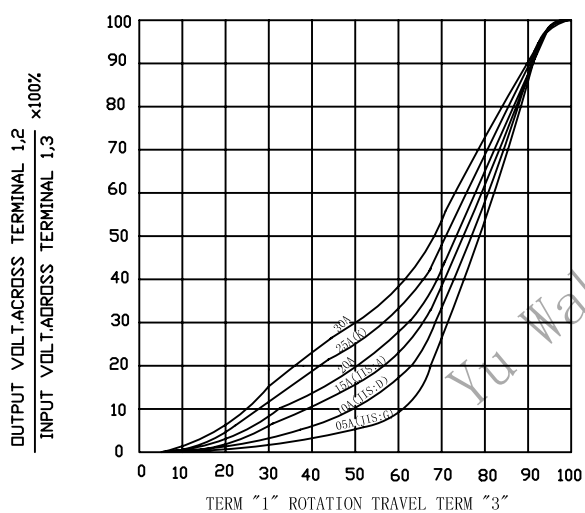
TAPER B SERIES



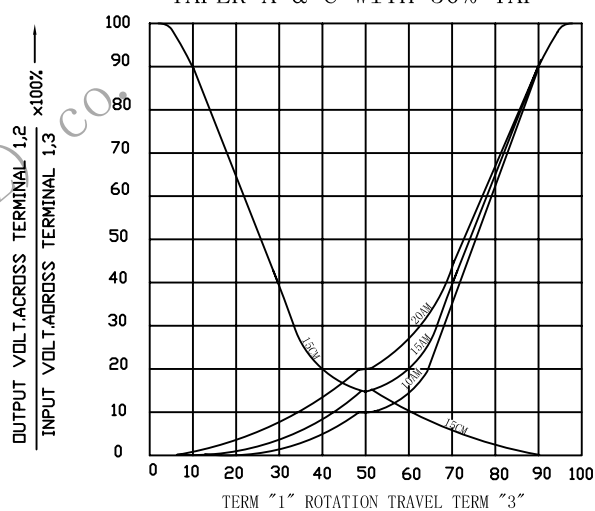
TAPER B WITH 50% TAP



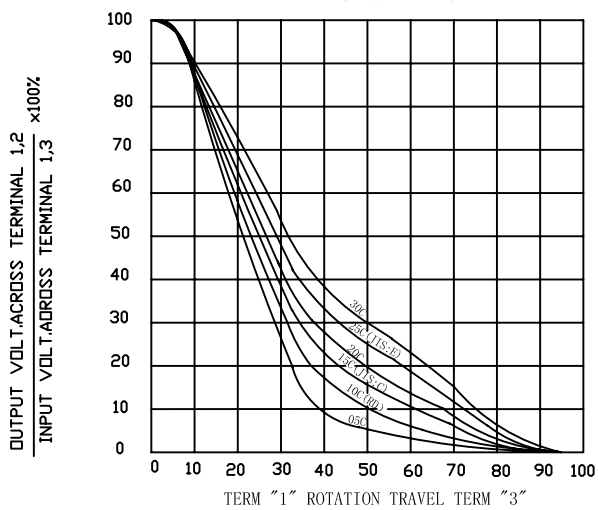
TAPER A SERIES



TAPER A & C WITH 50% TAP



TAPER C SERIES



TAPER M & N SERIES

