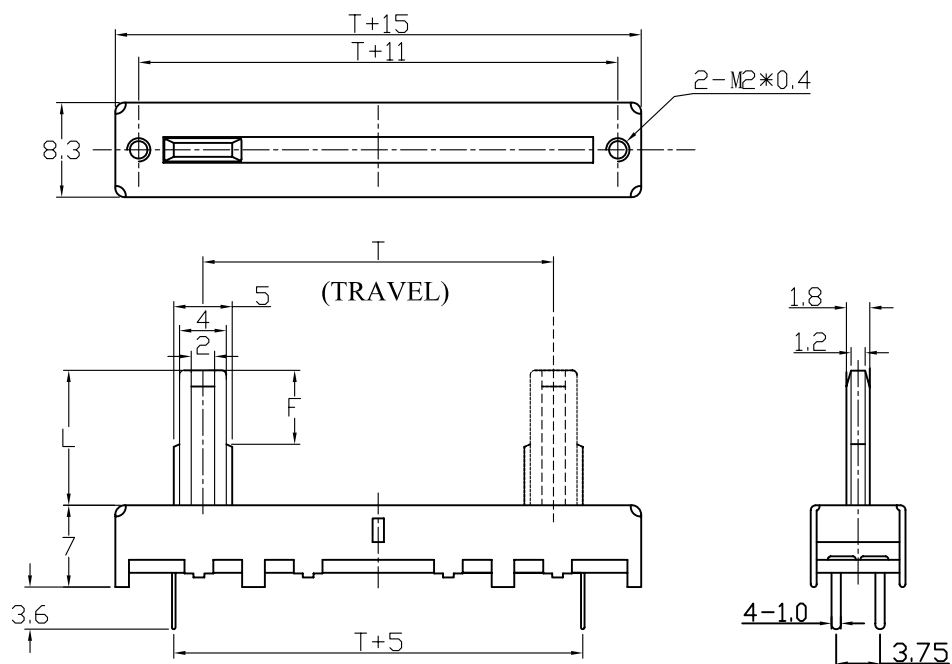


一、直滑式電位器系列技術規格書

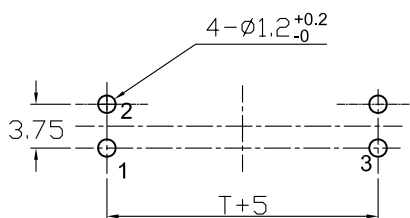
Slide Potentiometers Technic Specifications

1. 電氣性能 (Electrical Characteristic)					
序号	項目			特性	
1.1	全阻抗值 (Total Resistance)			1KΩ ~ 1MΩ	
1.2	全阻抗值允許偏差 (Total Resistance Tolerance)			± 20%	
1.3	電阻隨溫度變化特性 (Resistance of temperature change character)			20℃~75℃: ΔR/R ≤ ±5%, -25℃~20℃: ΔR/R ≤ ±4.5%	
1.4	阻值變化特性 (Resistance Taper)			B	
1.5	零位阻值 (Residual Resistance)			1 And 2 R ≤ 20Ω 2 And 3 R ≤ 20Ω	
1.6	額定功率 (Rated Power)			0.05W	
1.7	最高使用電壓 (Max. Operating Voltage)			AC 100V	
1.8	動雜音 (Rotational Noise)			Less Than 47mv	
1.9	絕緣阻抗 (Insulation Resistance)			100MΩ at DC250V	
1.10	耐電壓 (With Stand Voltage)			For 1 minute at AC 300V	
2. 機械性能 (Mechanical Characteristics)					
2.1	定位點			/	
2.2	滑動力矩 (Operating force)			20~200gf.cm	
2.3	柄的拉、押強度 (Pull-Push Strength)			5.0Kgf	
2.4	止檔強度 (Stopper strength)			5.0kgf.cm.max	
2.5	滑動行程 (Slide travel)			20 ± 1.0mm	
2.6	焊錫耐熱性 (Resistance To Soldering Heat)			260 ± 5℃ and less than 3 seconds	
3. 耐久性能 (Durability)					
3.1	使用溫度 (Operating Temperature)			-10℃ ~ +70℃	
3.2	滑動壽命 (Sliding Life)			15,000Cycles	
4. 外形尺寸圖 / 曲線特性圖 (Shape size drawing / curve characteristic drawing)				見附頁 (Please see attachment)	
批 准		審 核		設 計	

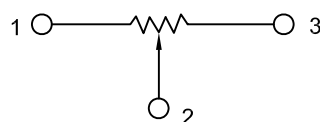
外形圖
Mechanical Dimensions



安裝孔位置圖
Mounting Hole



接線圖
Circuit Explanation



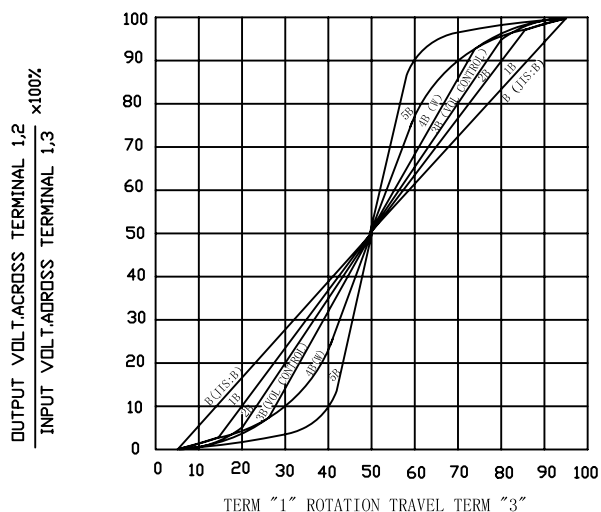
	<input type="checkbox"/>	<input type="checkbox"/>	<input type="checkbox"/>	<input type="checkbox"/>	<input type="checkbox"/>	<input type="checkbox"/>
X	1	2	3	5	6	7
L	10	12.5	15	18	20	25
F	5	5	5	5	5	5

MODEL NO.	T	
<input type="checkbox"/> C2043N	20	<input type="checkbox"/>
<input type="checkbox"/> C3043N	30	<input type="checkbox"/>
<input type="checkbox"/> C4543N	45	<input type="checkbox"/>
<input type="checkbox"/> C6043N	60	<input type="checkbox"/>

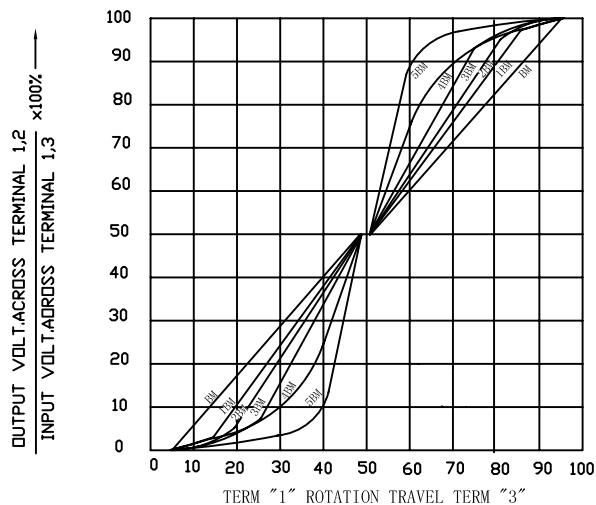
3				PRODUCT NAME	Slide Potentiometers (with case)		
2				MODEL NAME	C□□43N-□A1-Value T X		
1				APPROVED BY	CHECKED BY	DRAWN BY	
NO	DATE	DESCRIPTION					
		DIMENSION	TOLERANCE	SCALE			
		$l \leq 10$	± 0.2	UNIT			
		$10 < l \leq 30$	± 0.5	VER.			
		$30 < l \leq 100$	± 1.0	DATE	07/08/01		

RESISTANCE TAPER

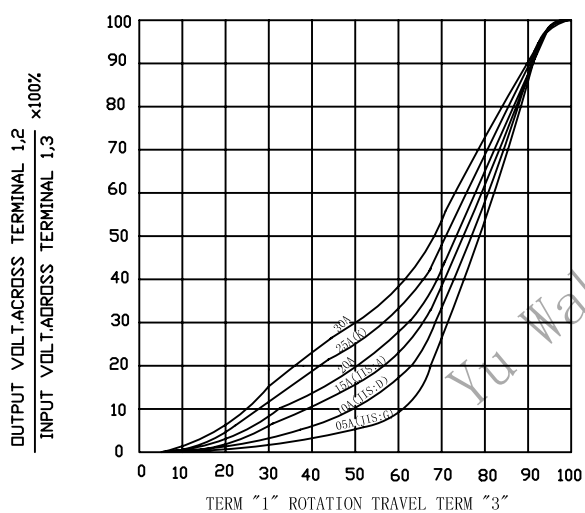
TAPER B SERIES



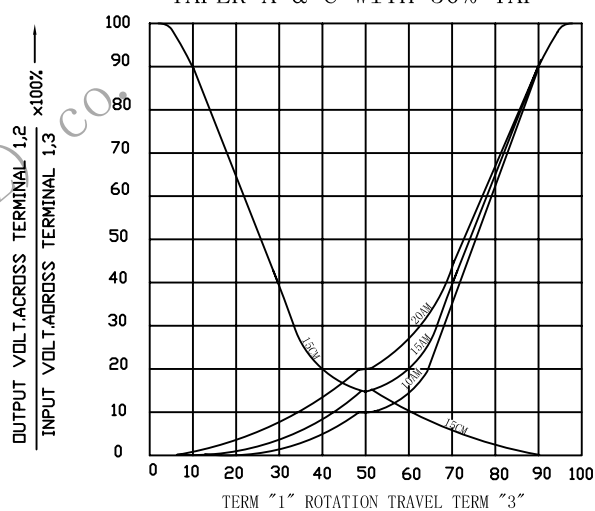
TAPER B WITH 50% TAP



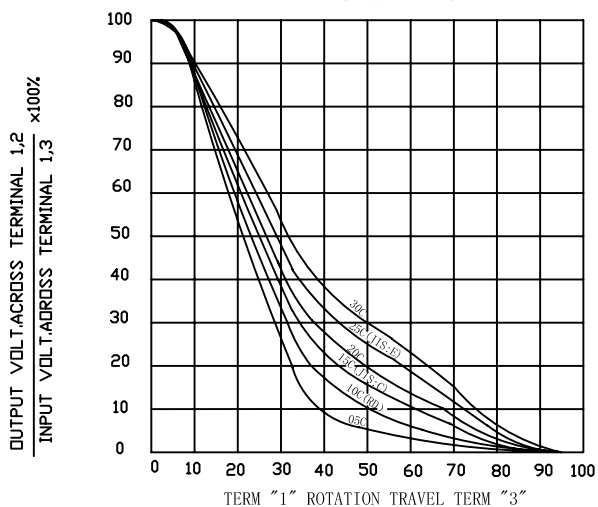
TAPER A SERIES



TAPER A & C WITH 50% TAP



TAPER C SERIES



TAPER M & N SERIES

