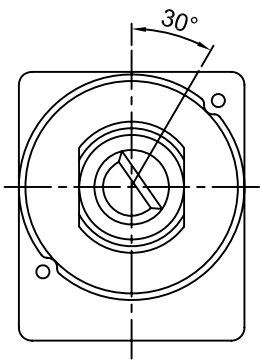
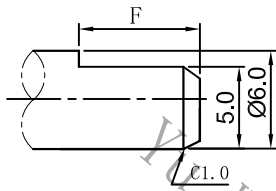


# Type of shaft: 軸的型式

R16R□S-

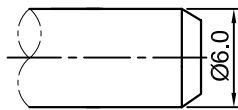


shaft shown in full C.C.W. position



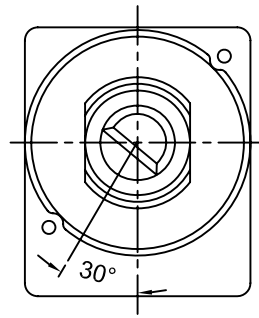
F TYPE:

X	1	2
L	17	19
F	8	8

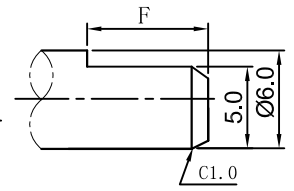


S TYPE:

X	4	
L	19	



shaft shown in full C.C.W. position

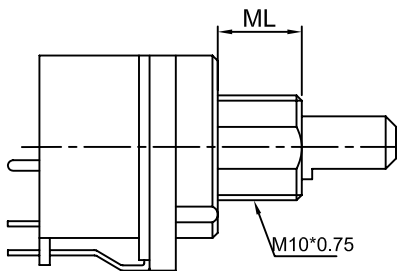


F TYPE:

X	M	
L	19	
F	8	

Brevity code:

R16□□S-  
V W



W	1	2	3	4	5	6
Shaft Materials	BRASS	PLASTIC	BRASS	PLASTIC	BRASS	PLASTIC
ML	8	8	9	9	10.5	10.5

V	P	R
Switch Operation	Push	Rotary

## 電氣的性能 :Electrical Characteristics

R16P□S

R16R□S

全阻抗值 (Total Resistance)	1KΩ~1MΩ
全阻抗值允許偏差 (Total Resistance Tolerance)	±20%(more than 1MΩ±30%)
阻值變化特性 (Resistance Taper)	A、B
殘留阻值 (Residual Resistance)	R ≥ 250KΩ 0.1% max.of total resistance 10KΩ < R < 250KΩ 20Ω max. R ≤ 10KΩ 10Ω max.
額定功率 (Rated Power)	0.2W
最高使用電壓 (Max.Operating Voltage)	250VAC,10 A
絕緣阻抗 (Insulation Resistance)	More than 100MΩ at DC 250V
耐電壓 (Withstand Voltage)	For 1minute or more at DC 500V

## 機械的性能:Mechanical Characteristics

全回轉角度 (Rotation Angle)	270°±5°	300°±5°
旋轉力矩 (Rotation Torque)	10~100 gf.cm	20~200 gf.cm
軸的拉、押強度 (Pull-Push Strength)	5 kgf.cm	
轉動止檔強度 (Rotational Stop-End Torque)	8 kgf .Max	
軸的搖動量 (Shaft Wobble)	0.7*L/30mmp-p MAX.	
C.C.位置 ( Click position)	0 detent / 16 detent	
C.C.扭力 ( Click torque)	50~150 gf.cm	

## 耐久的性能 (Durability)

回轉壽命 (Rotational Life)	15,000 cycles
------------------------	---------------